




MINNESOTA 3M PFC SETTLEMENT MEETING

FEBRUARY 19 & 20, 2019

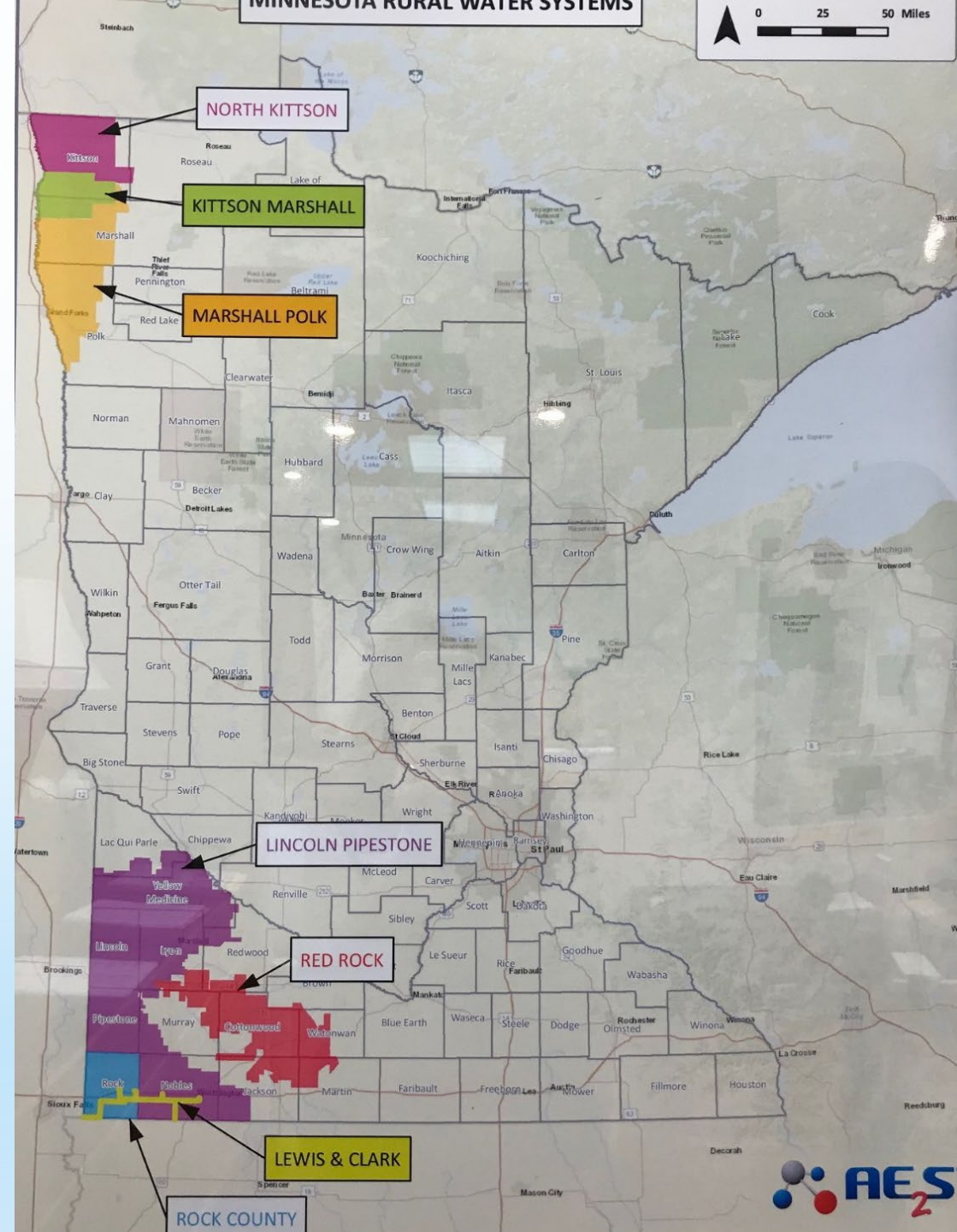


WHAT IS A RURAL WATER SYSTEM?

- SAFE DRINKING WATER ACT – 1974
 - NATIONAL RURAL WATER ASSOCIATION (1976)
 - MINNESOTA RURAL WATER ASSOCIATION (1978)
 - LINCOLN-PIPESTONE RURAL WATER SYSTEM (DEC 1978)
- 

RURAL WATER SYSTEMS IN MINNESOTA

- NORTH:
 - NORTH KITTSON RWS
 - KITTSON-MARSHALL RWS
 - MARSHALL-POLK RWS
- SOUTH:
 - ROCK COUNTY RWS
 - RED ROCK RWS
 - LINCOLN-PIPESTONE RWS



LPRW CREATION:

- Ü INFORMATIONAL MEETING – COUNTY PLANNING & DEVELOPMENT COMMISSION (1976)
- Ü STEERING COMMITTEE FORMED
- Ü PETITIONED RURAL RESIDENTS/COMMUNITIES FOR INTEREST
- Ü LEGAL & ENGINEER SECURED
- Ü FEASIBILITY STUDY
- Ü FMHA REVIEW AND APPROVAL OF FEASIBILITY STUDY
- Ü DISTRICT COURT APPOINTS WATER COMMISSION



§ *MN STATUTE 116A ET AL.*

APPROVED

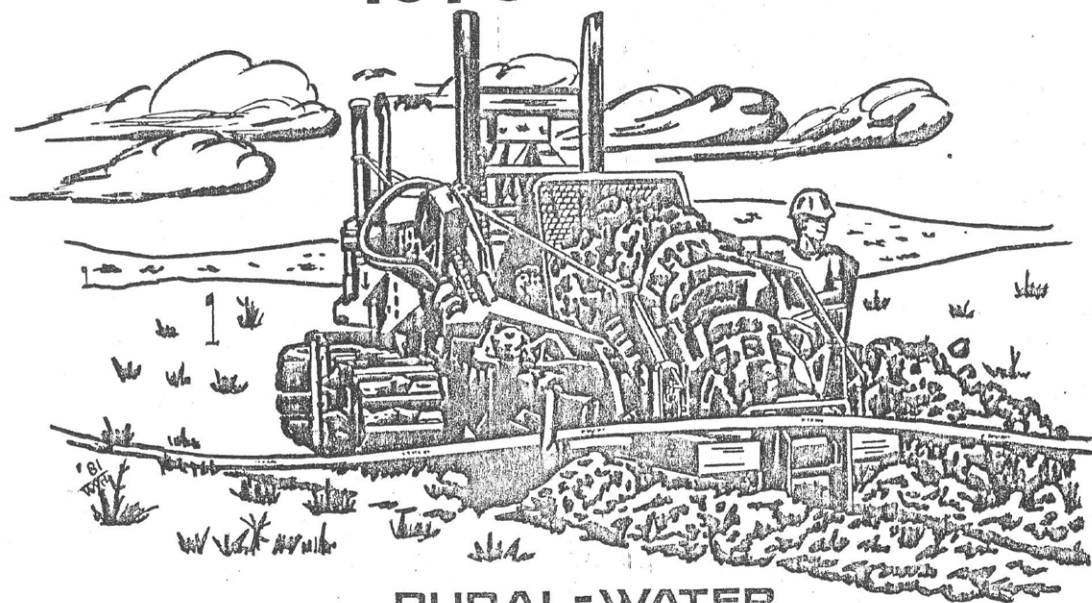
LINCOLN-PIPESTONE RURAL WATER SYSTEM





NOT IF....BUT WHEN?

1976 - 1981

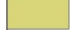





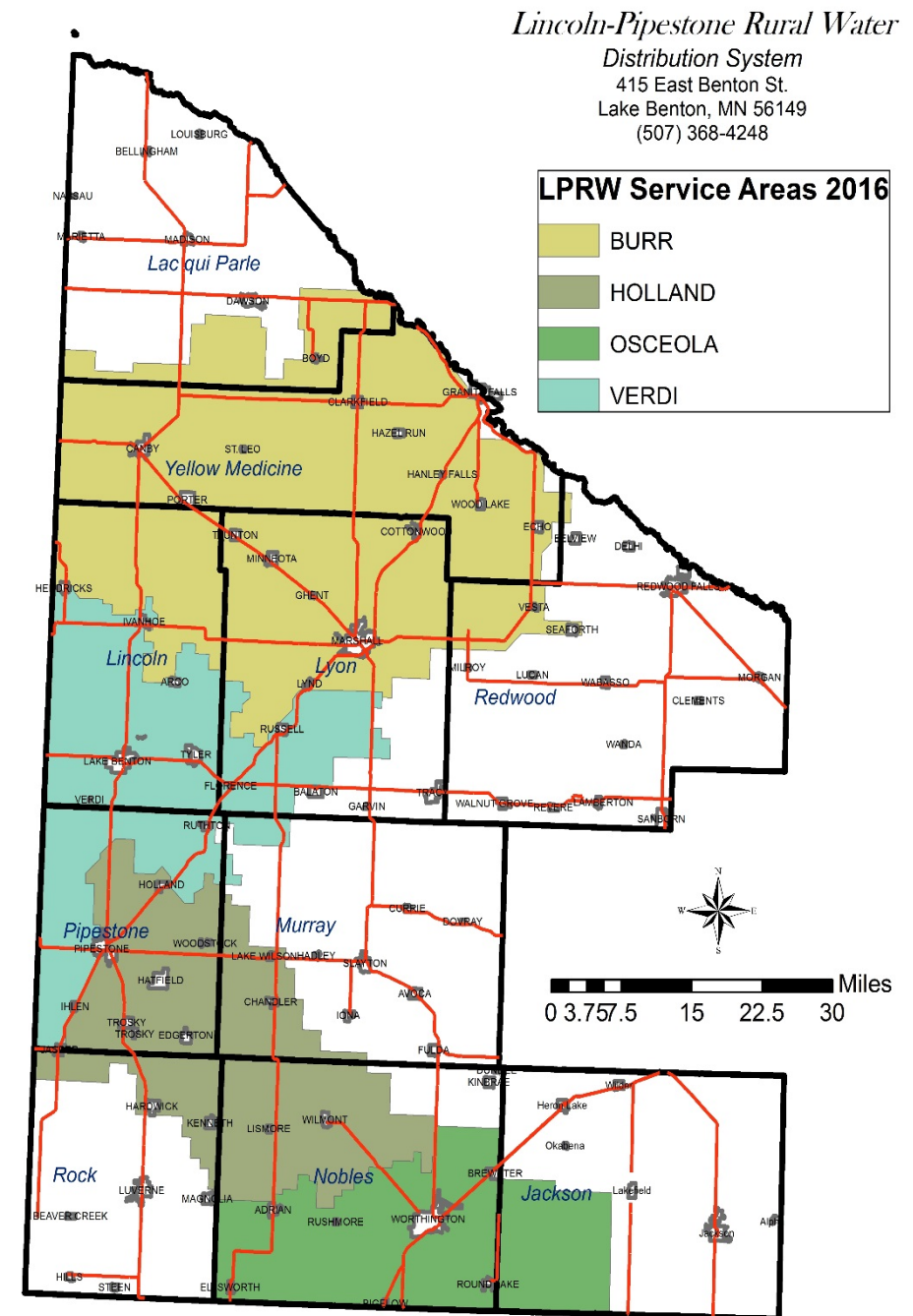
RURAL-WATER
LINCOLN-PIPESTONE



*Lincoln-Pipestone Rural Water
Distribution System*
415 East Benton St.
Lake Benton, MN 56149
(507) 368-4248

LPRW Service Areas 2016

	BURR
	HOLLAND
	OSCEOLA
	VERDI



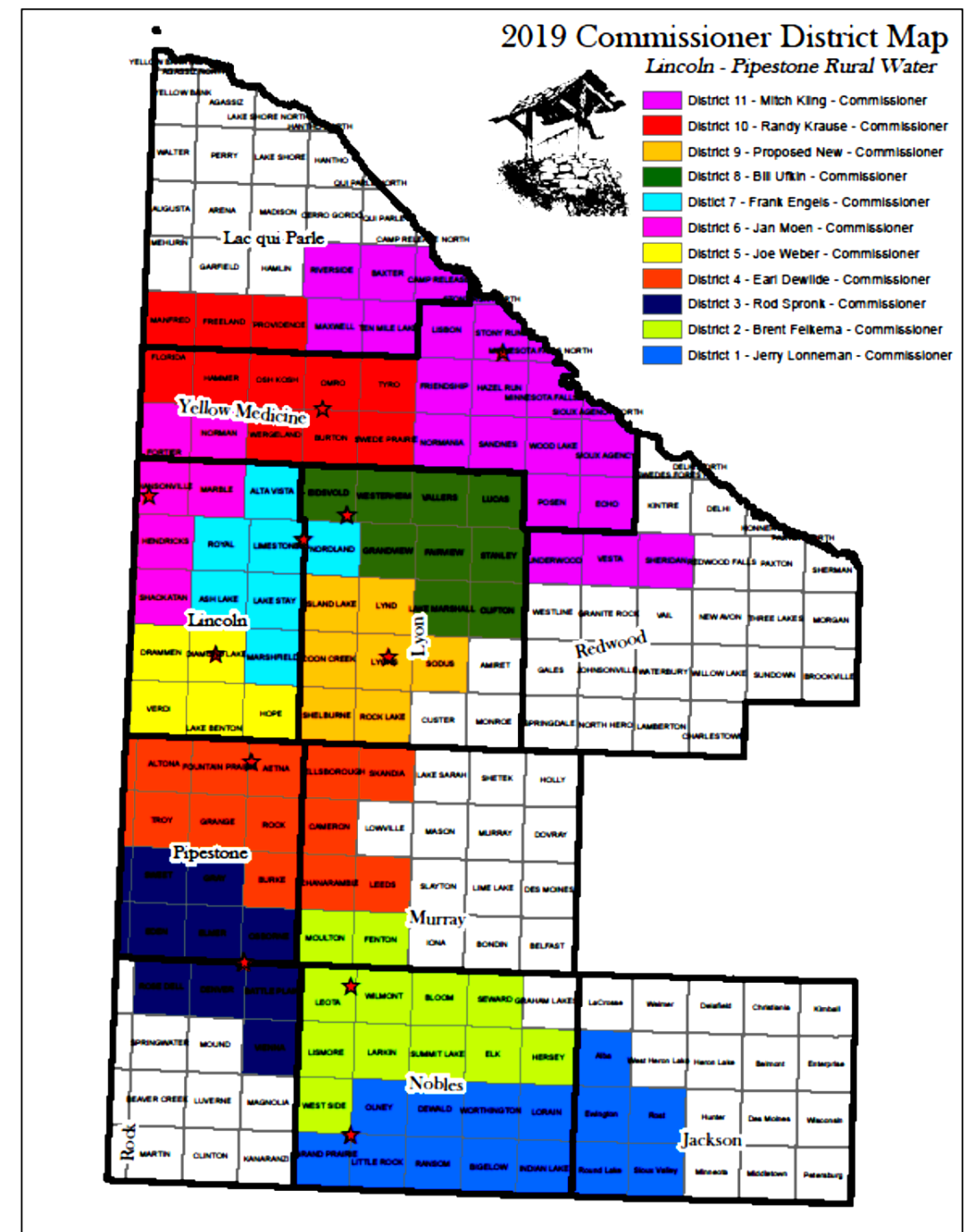
SYSTEM GROWTH

- 10 COUNTIES
- 4,600+ SERVICE CONNECTIONS
- 37 CITIES/TOWNS
- MULTIPLE WATER SOURCES/INTERCONNECTIONS
- OVER 3,400 MILES OF PIPELINE;
SIZE: 1"-14" DIA.



GOVERNANCE

- 11 MEMBER BOARD
- 4-YR TERMS, ROTATING
- APPOINTMENT PROCEDURES
- SIMPLE MAJORITY FOR APPROVAL

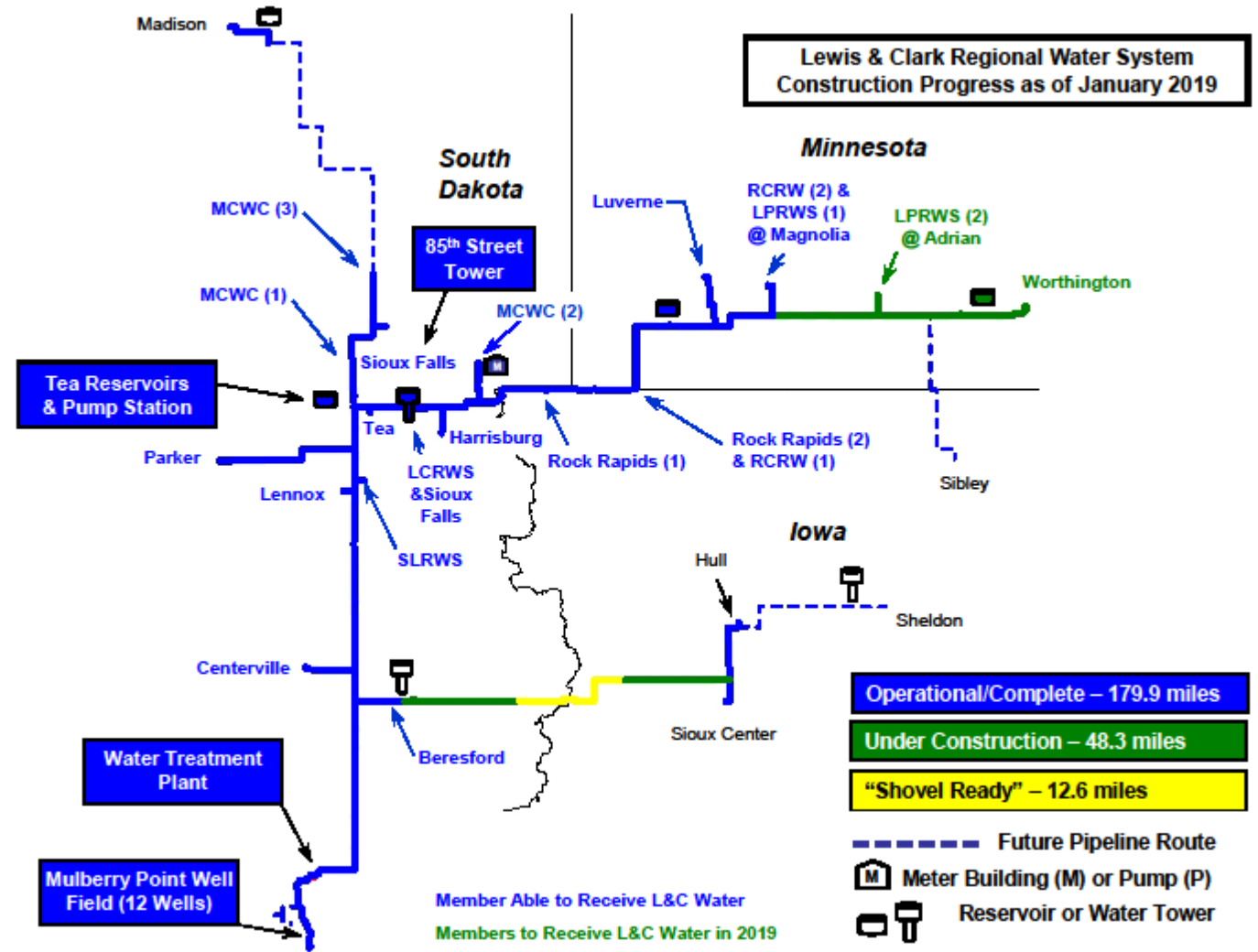


Water Quantity

Total Number of Accounts, 2000-2018

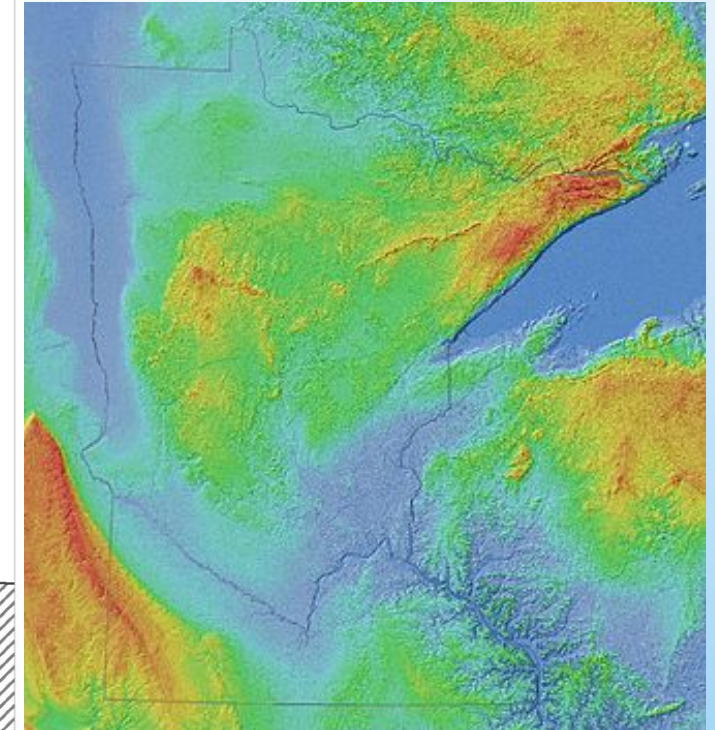
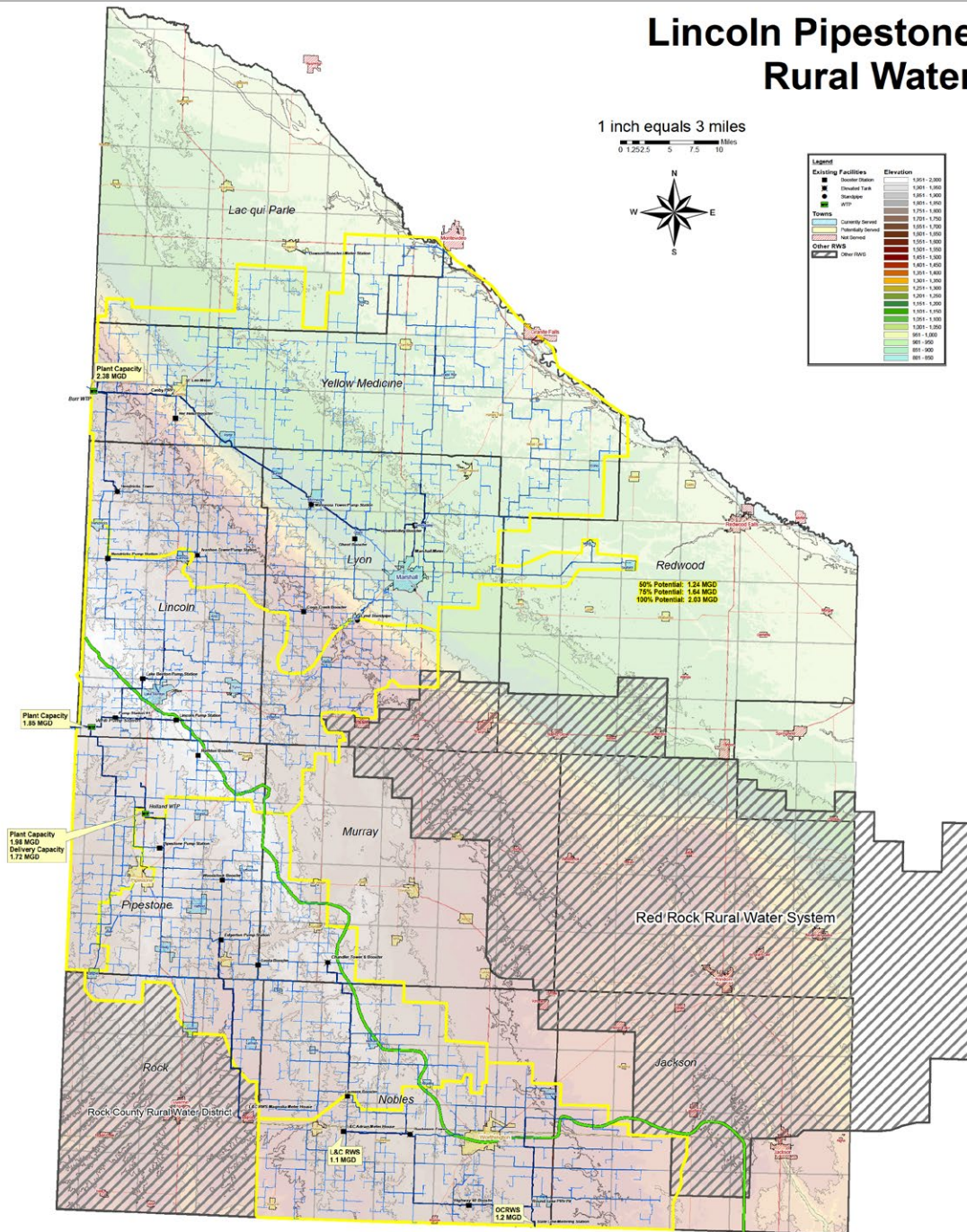
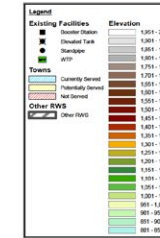


LEWIS & CLARK REGIONAL WATER SYSTEM



Lincoln Pipestone Rural Water

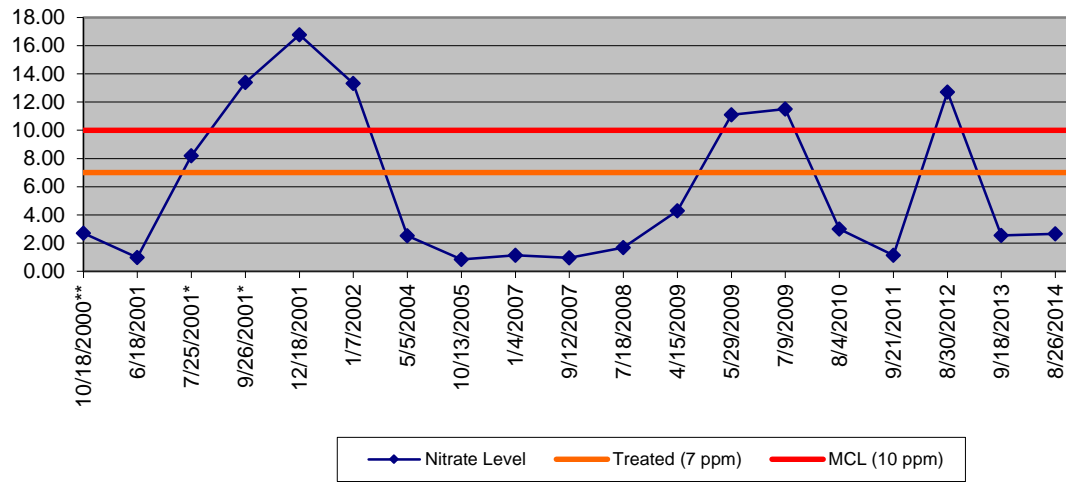
1 inch equals 3 miles
0 1.25 2.5 5 7.5 10 Miles



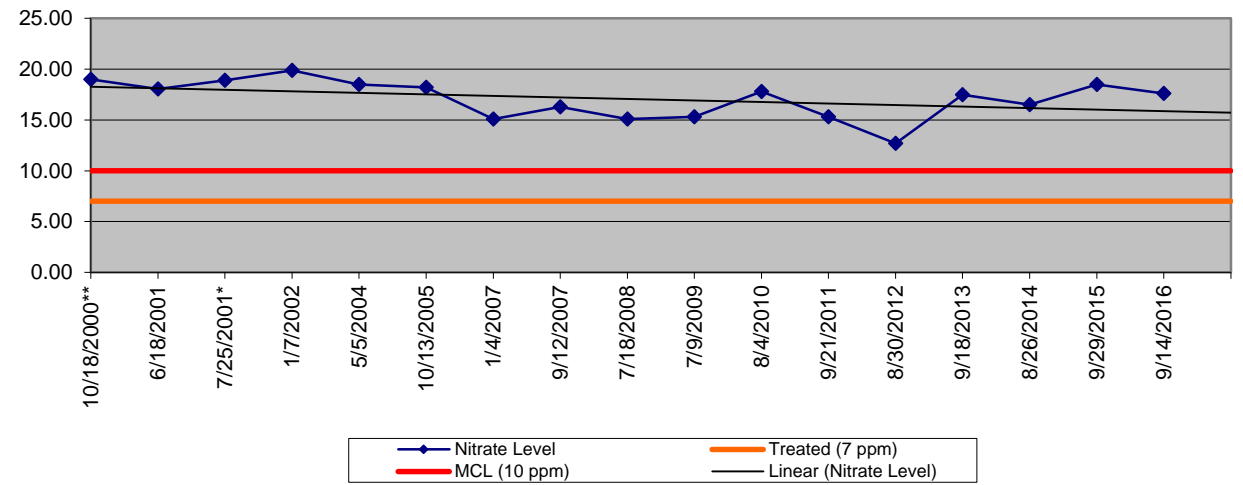
Water Quality



HOLLAND NITRATE LEVELS - PW-7
Results of Raw Water Analysis, 2000-Present



HOLLAND NITRATE LEVELS - PW-8
Results of Raw Water Analysis, 2000-Present

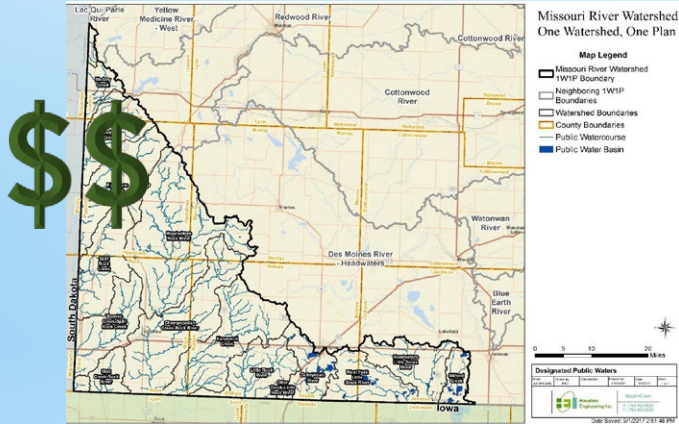


GROUNDWATER PROTECTION EFFORTS: WELLHEAD PROTECTION (WHP)



\$\$

GROUNDWATER PROTECTION EFFORTS: WATERSHED PLANNING



\$\$



\$\$

\$\$



\$\$



\$\$

STAKEHOLDERS

Counties



LGUs




PUBLIC





LPRW MISSION:

**TO ENHANCE THE QUALITY OF LIFE FOR THE PEOPLE
IN THE SOUTHWEST MINNESOTA AREA BY ACQUIRING
AND PROVIDING RELIABLE, HIGH QUALITY,
AFFORDABLE WATER IN AN ENVIRONMENTALLY
RESPONSIBLE MANNER THROUGH A PUBLICLY-
OWNED SYSTEM.**



QUESTIONS?

JASON OVERBY

LINCOLN-PIPESTONE RURAL WATER

507-368-4248 (OFFICE)

507-820-2547 (CELL)

LPRW@ITCTEL.COM

