

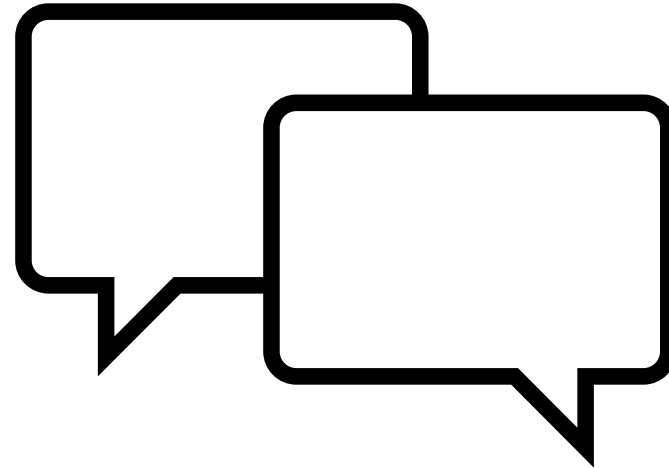
# Priority 2 RFP Geographic Scope Discussion

Andrew McFadden, Abt Associates

November 15, 2023

# Feedback Request

- Principles used to guide selection of geographic boundaries
- Pros/cons of using jurisdictional, hydrologic or other boundaries



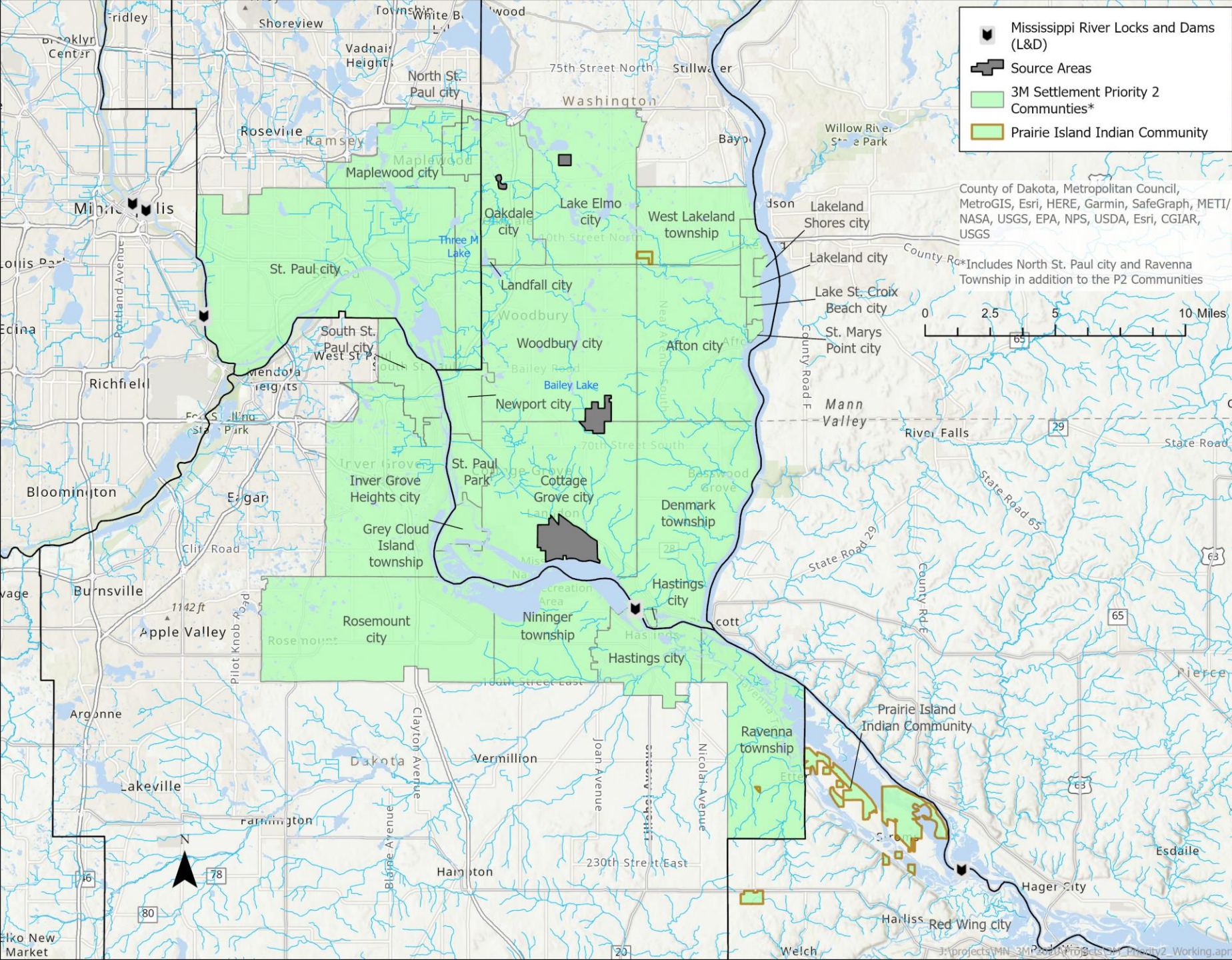
## Principles to guide the geographic scope for Priority 2 projects

- East Metropolitan area and downstream areas of the Mississippi and St. Croix Rivers
- Inclusive of PFAS impacted areas from 3M releases
- Inclusive of broader areas to allow for projects with lower PFAS risk
- Ecological and recreational boundary focus versus jurisdictions
- Inclusive of populations that are underserved



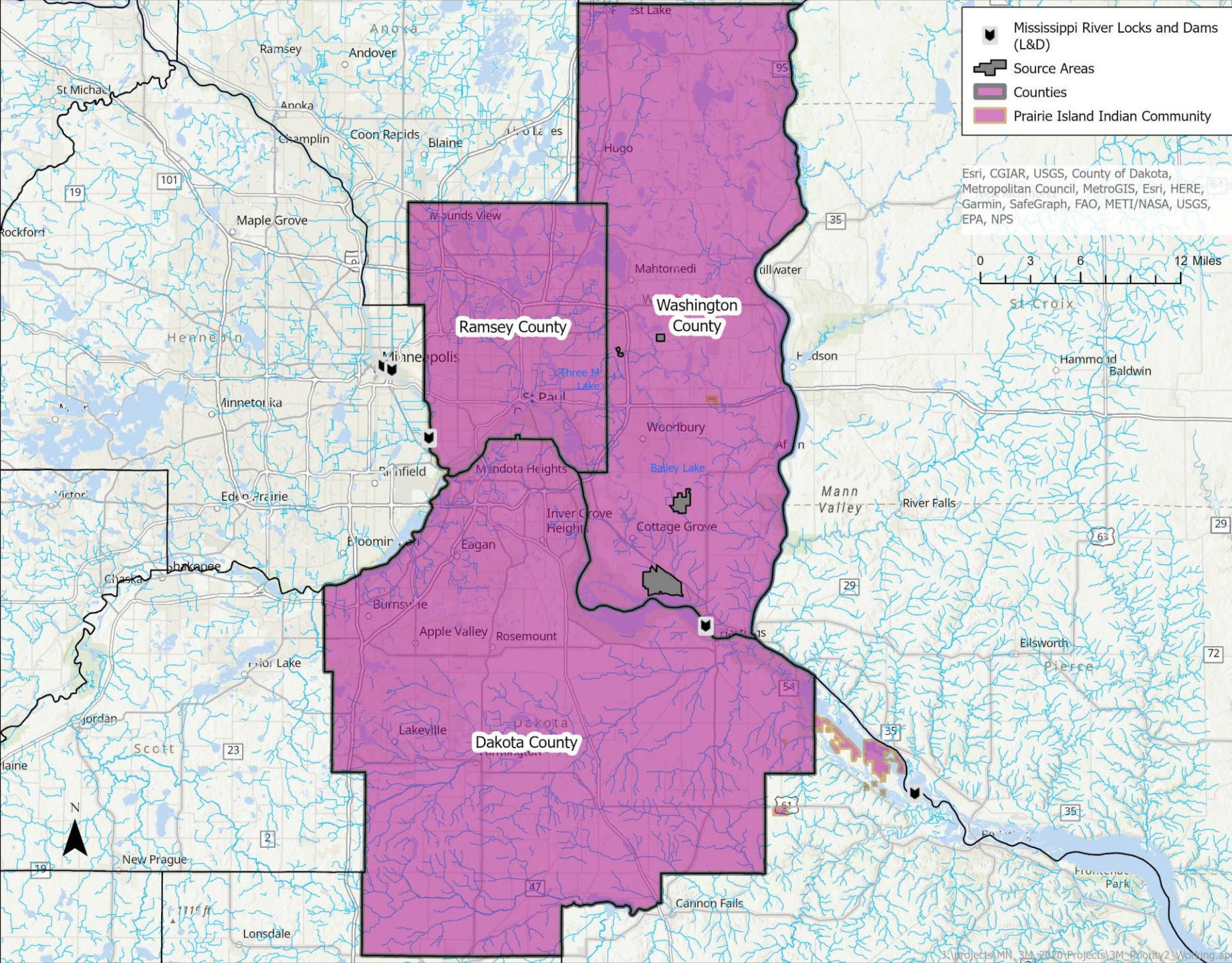
- Communities
- Counties
- Watershed Management Districts
- Hydrologic Unit Code Level 10 (HUC 10)
- HUC 12

# Communities



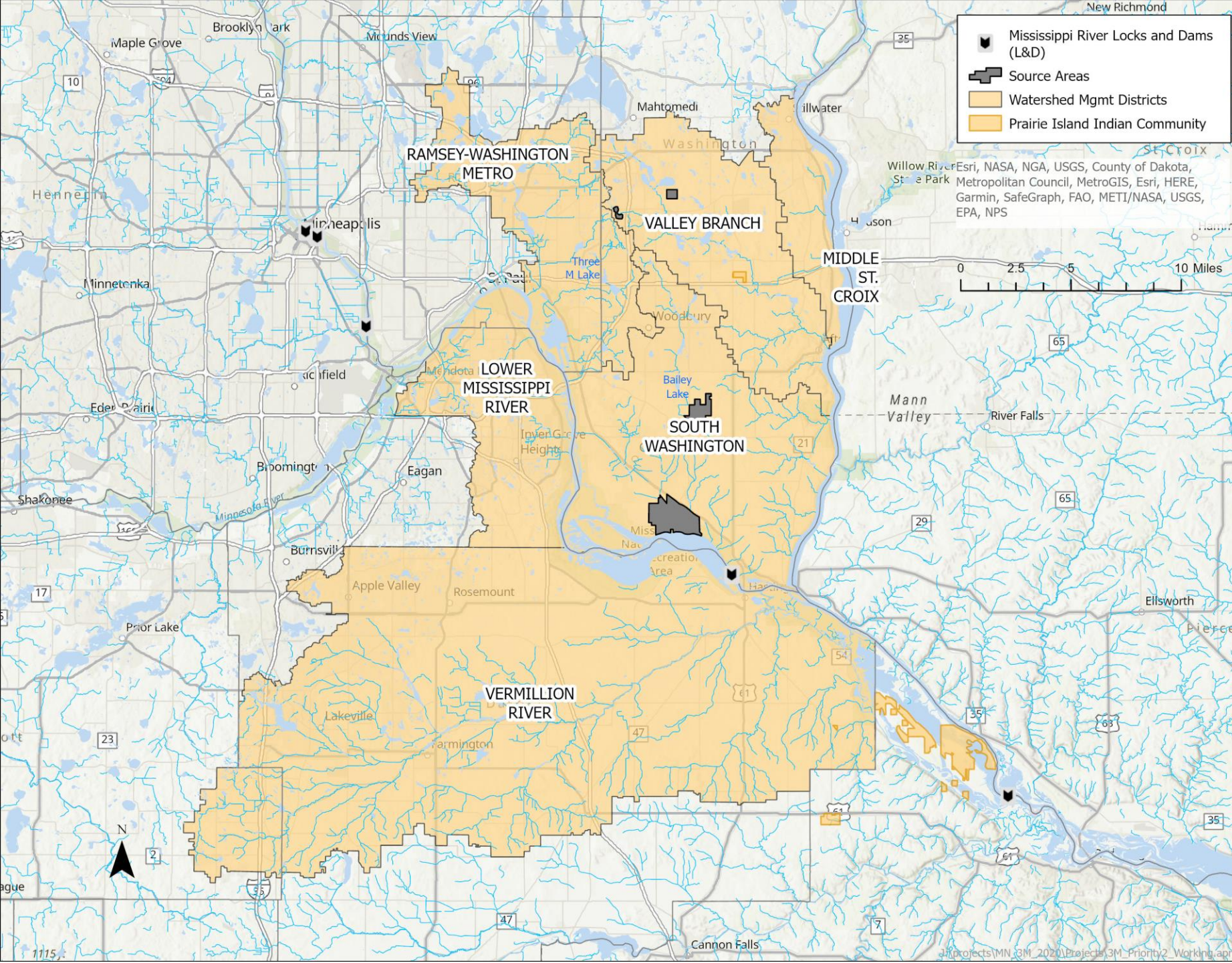
- Approximate Area: 430 square miles

# Counties



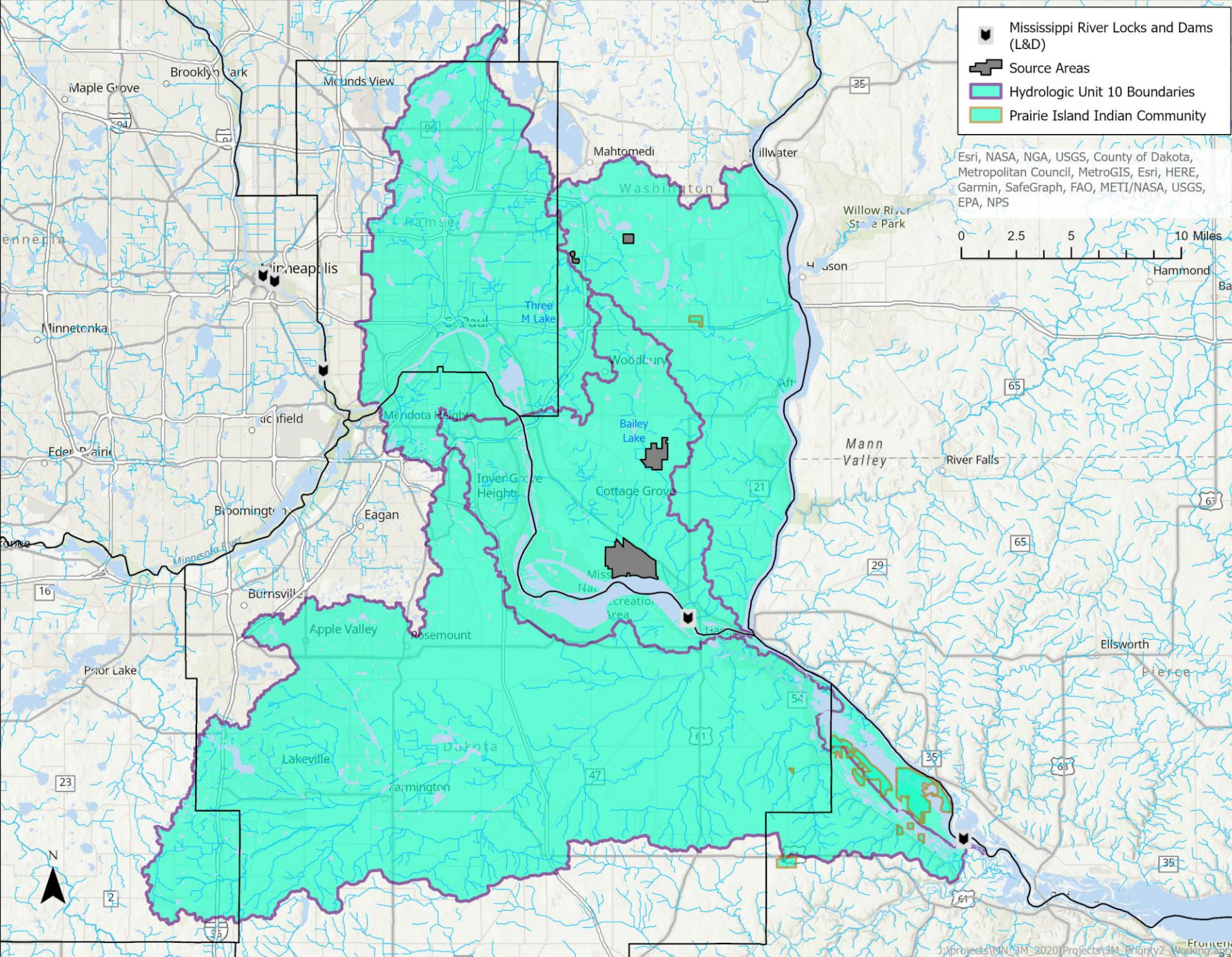
- Approximate Area: 1180 square miles

# Watershed Management Districts



- Approximate Area: 670 square miles
- Includes the Vermillion River, South Washington, Lower Mississippi River, Ramsey Washington Metro, Valley Branch, and Middle St. Croix Watershed Management Districts

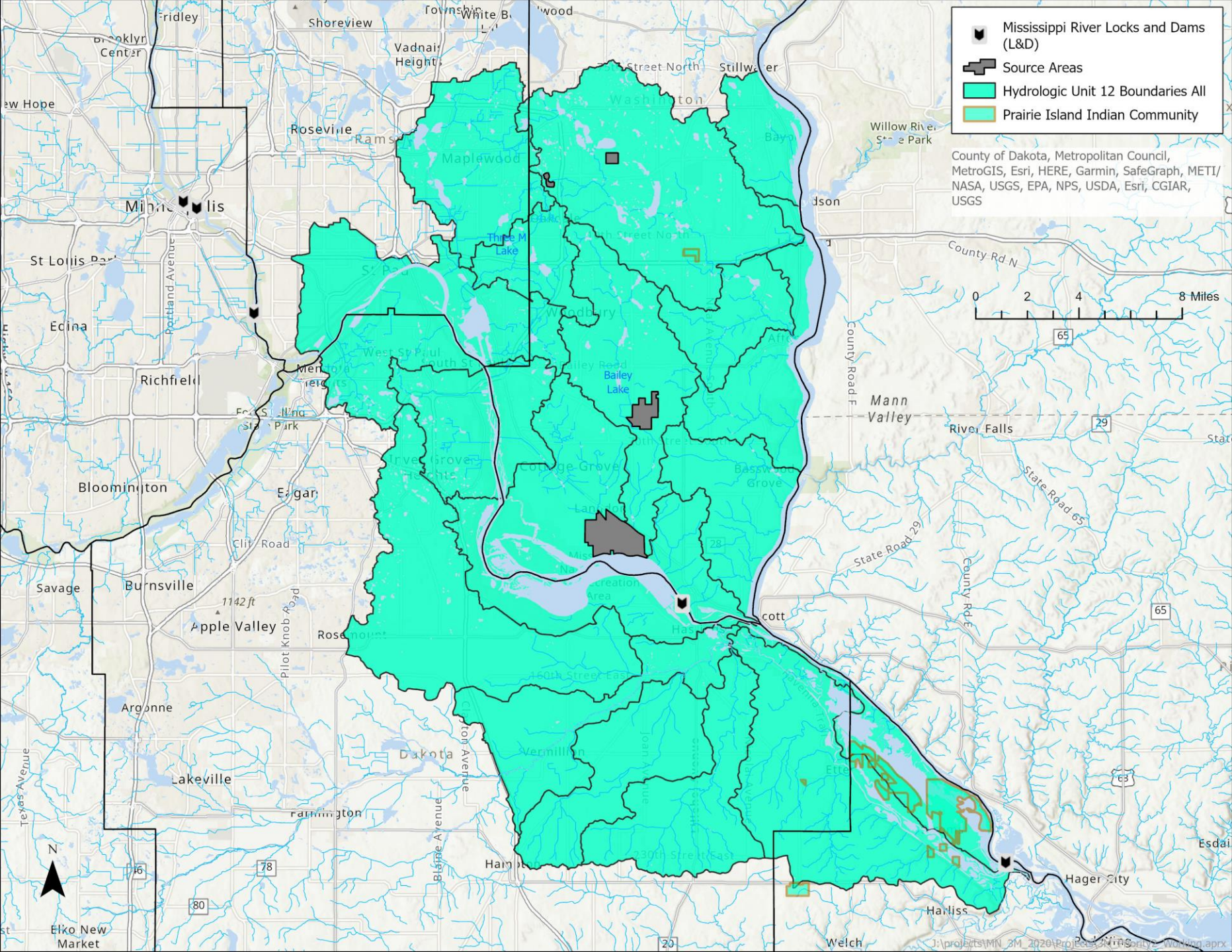
# HUC 10



- Approximate Area: 750 square miles



# HUC 12



- Approximate Area: 620 square miles

- Communities – ~430 sq miles
- Counties – ~1180 sq miles
- Watershed Management Districts – ~670 sq miles
- Hydrologic Unit Code Level 10 (HUC 10) – ~750 sq miles
- HUC 12 – ~620 sq miles

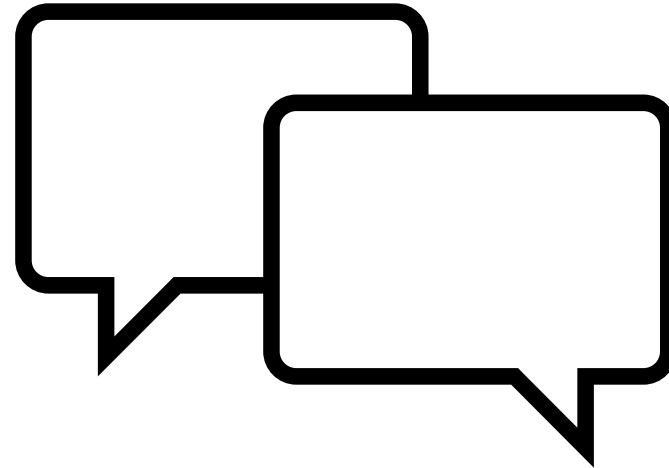
## Principles to guide the geographic scope for Priority 2 projects

- East Metropolitan area and downstream areas of the Mississippi and St. Croix Rivers
- Inclusive of PFAS impacted areas from 3M releases
- Inclusive of broader areas to allow for projects with lower PFAS risk
- Ecological and recreational boundary focus versus jurisdictions
- Inclusive of populations that are underserved



# Feedback Request

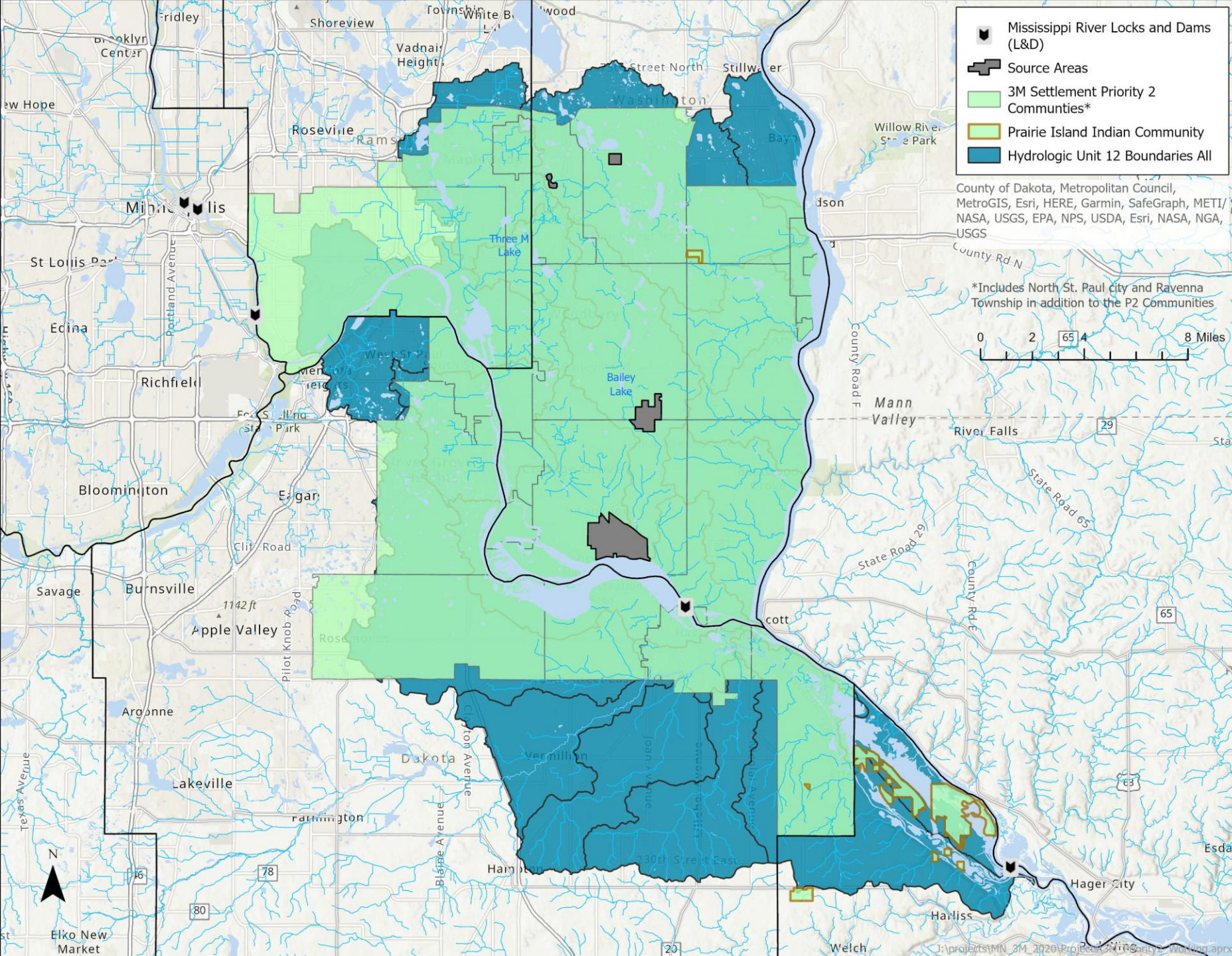
- Principles used to guide selection of geographic boundaries
- Pros/cons of using jurisdictional, hydrologic or other boundaries



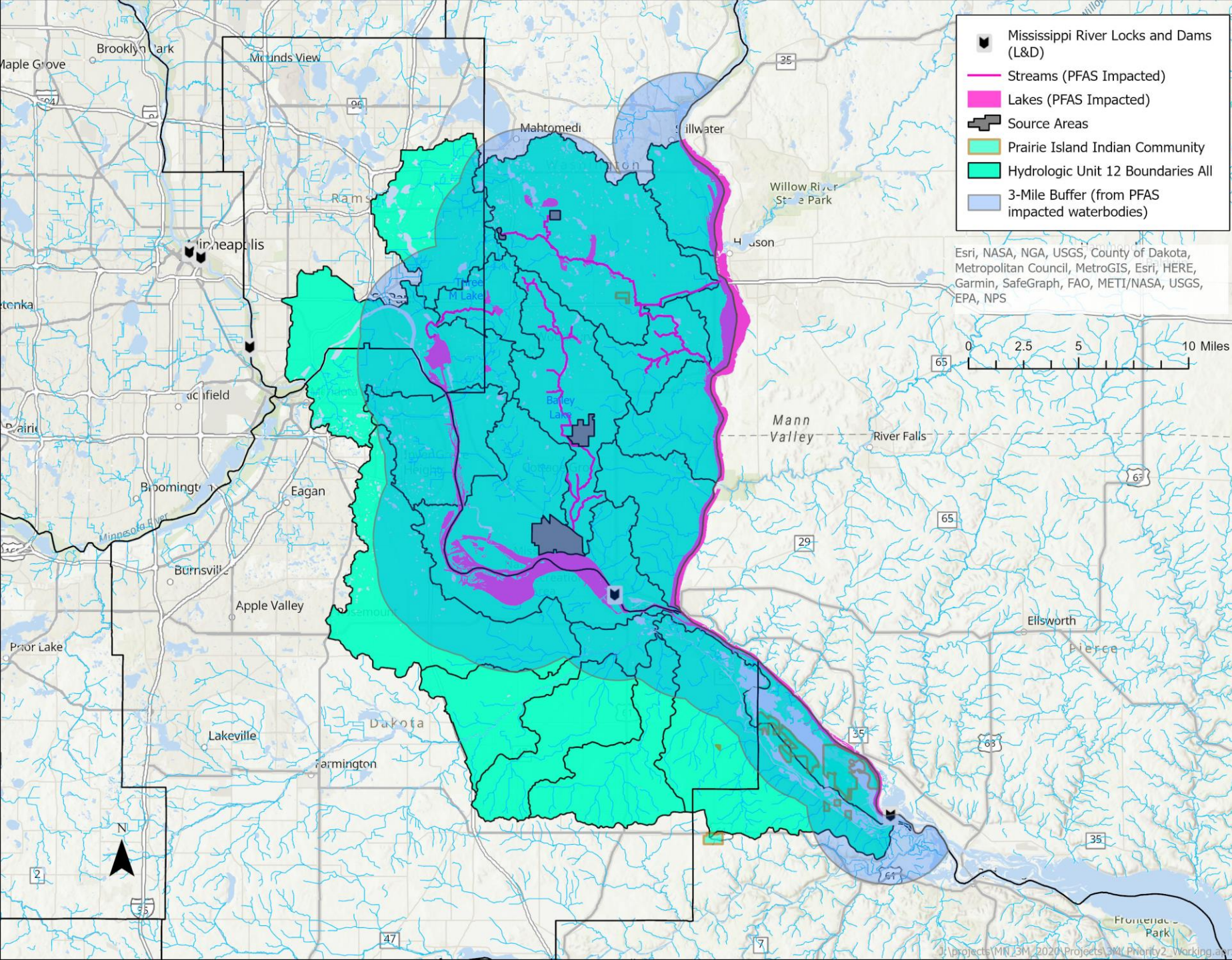
# Additional Requested Maps

---

# Communities / HUC12



# 3-mile buffer and HUC-12



Area of the 3-mile buffer approximately 400 square miles

The pink waterbodies include areas where there is evidence of PFOS impacts based on sample concentrations in water, sediment, or fish tissue when compared to risk thresholds. The 3-mile buffer is derived from these areas.