

July Work Group Preview: PFAS Data and Natural Resource Injury Extent

Andrew McFadden, Abt Associates

June 21, 2023

PFAS Injury and Existing Data

- Data collection efforts and reports helped to put PFAS contamination in a spatial context in the region
- Source examples
 - Project 1007 data (sediment, surface water, tissue, others)
 - Fish tissue consumption advisories (fish tissue, surface water)
 - Injury assessment documents (fish tissue, surface water, sediment)
 - Ongoing MPCA assessments and sampling (fish tissue, surface water)

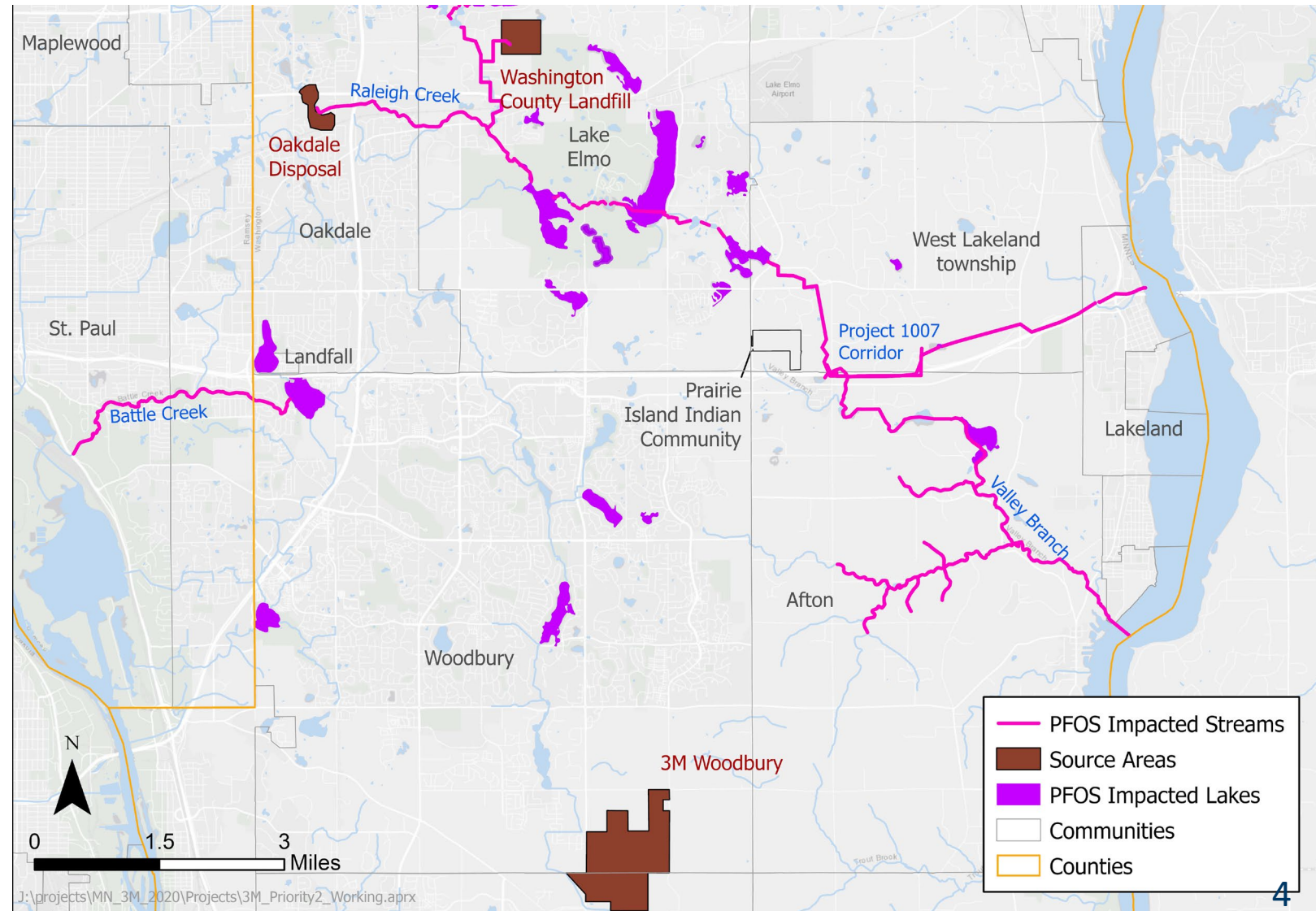
Note: Groundwater injury addressed in Priority 1

Priority 2 Approach to Identifying Impacted Resources

- Considered impacts to natural resources and recreational opportunities
- Based criteria on available lines of evidence
 - PFAS contamination pathways (groundwater, surface water, sediment, biota)
 - PFOS-impaired waters, and
 - Fish consumption PFOS advisories/PFOS in fish tissue
- Related to releases from 3M; cognizant of other PFAS sources

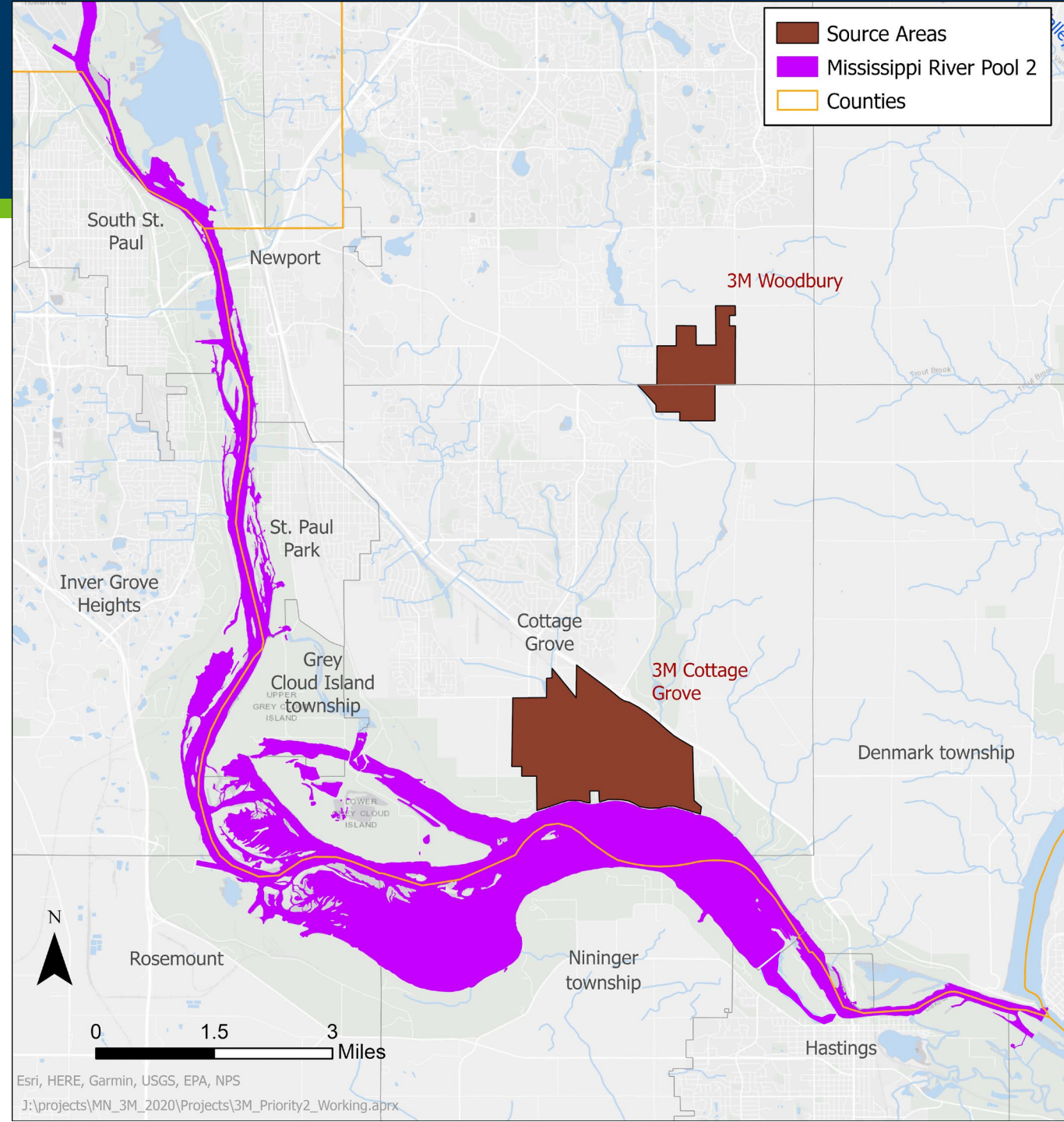
Lake and streams (East metro region)

- Contamination from the disposal sites to Project 1007 drainage to the river
- Contamination from the disposal sites via groundwater/surface water interactions
- Fish consumption PFOS advisories/PFOS in fish tissue
- Impaired Waters designation for PFOS



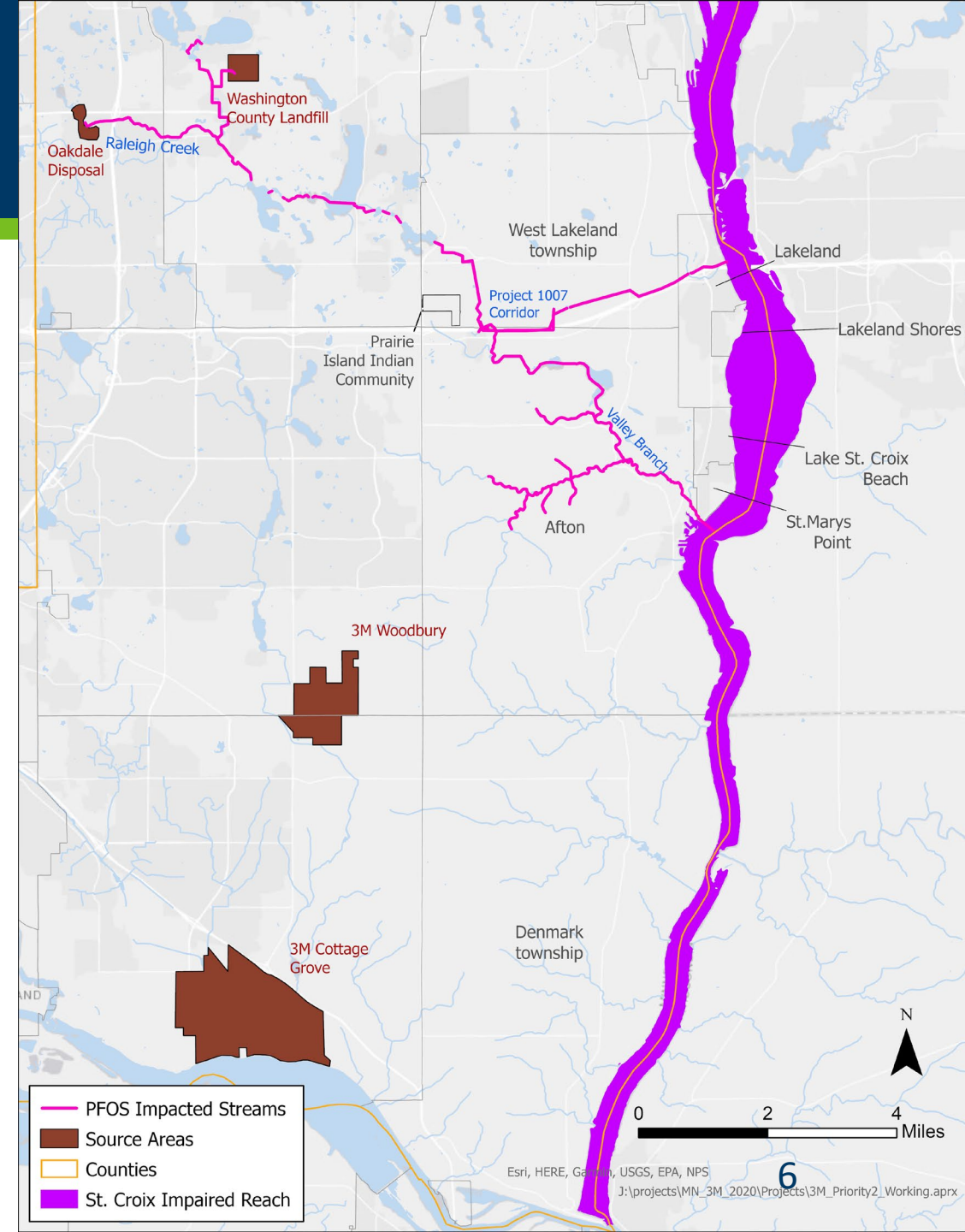
Mississippi River

- Contamination from the disposal sites via groundwater/surface water interactions
- Fish Consumption PFOS advisories
- Impaired Waters designation for PFOS

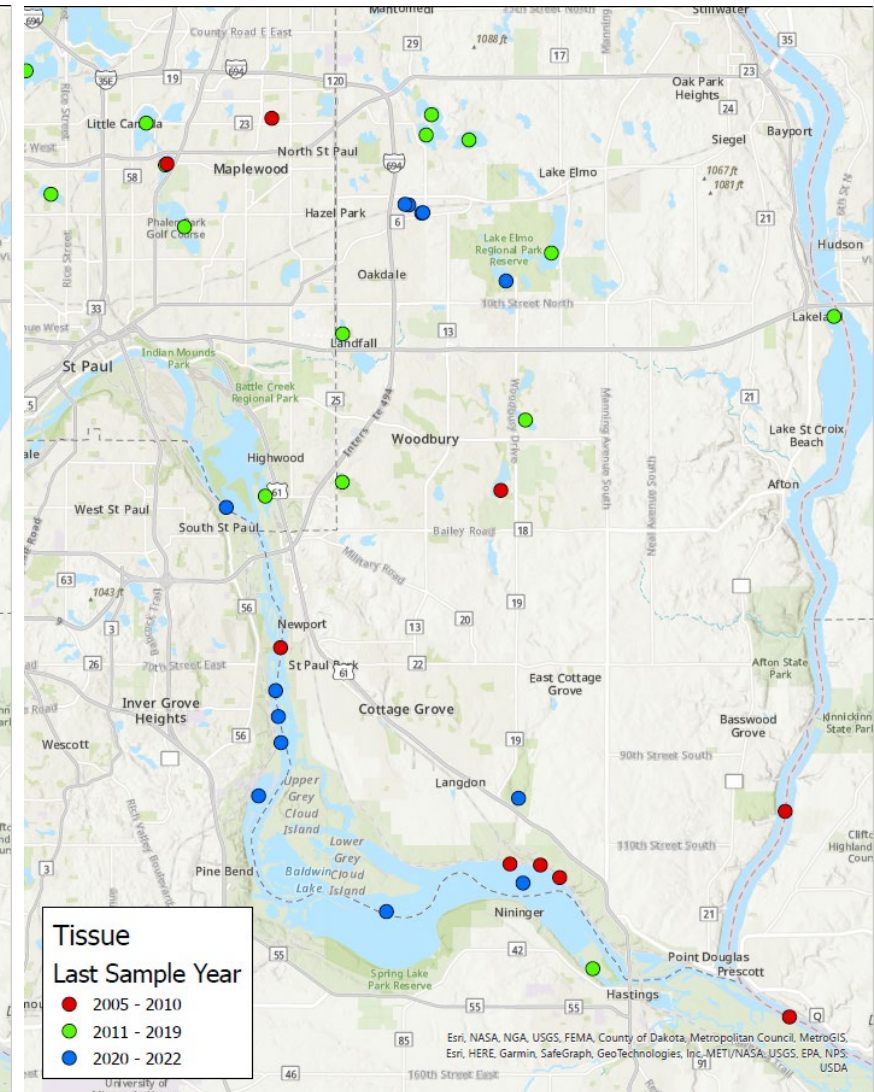
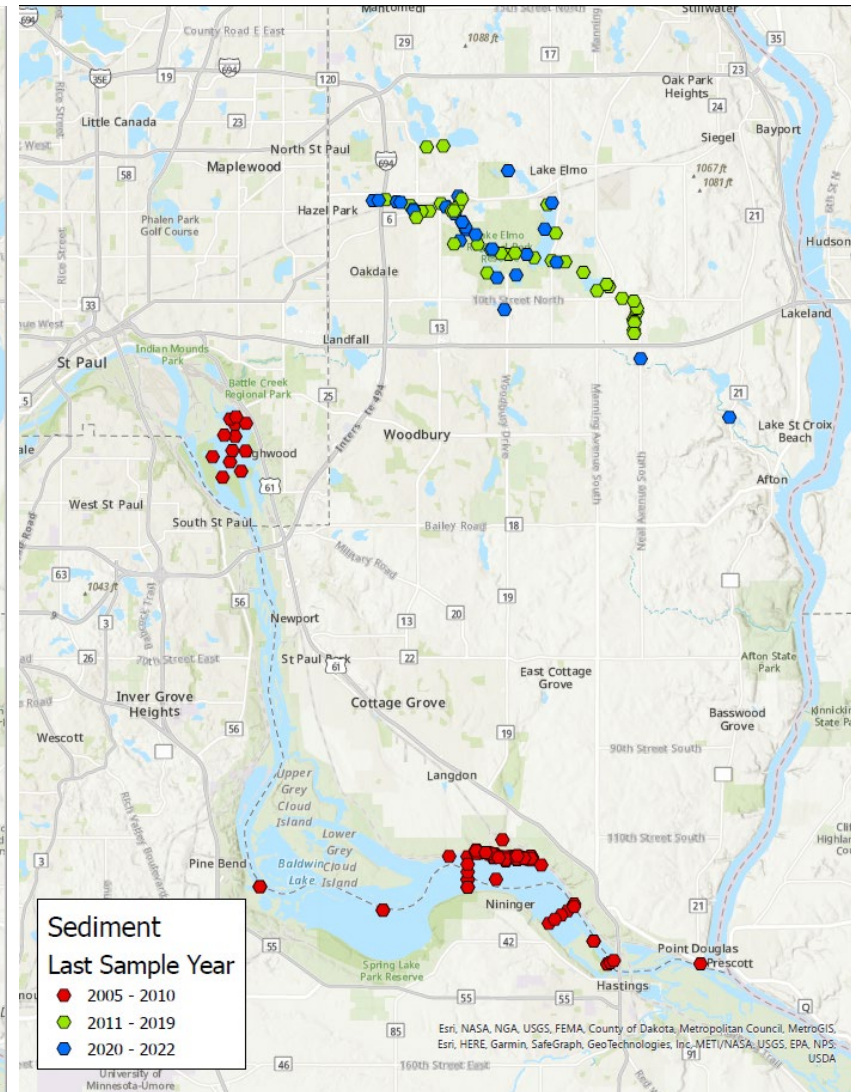
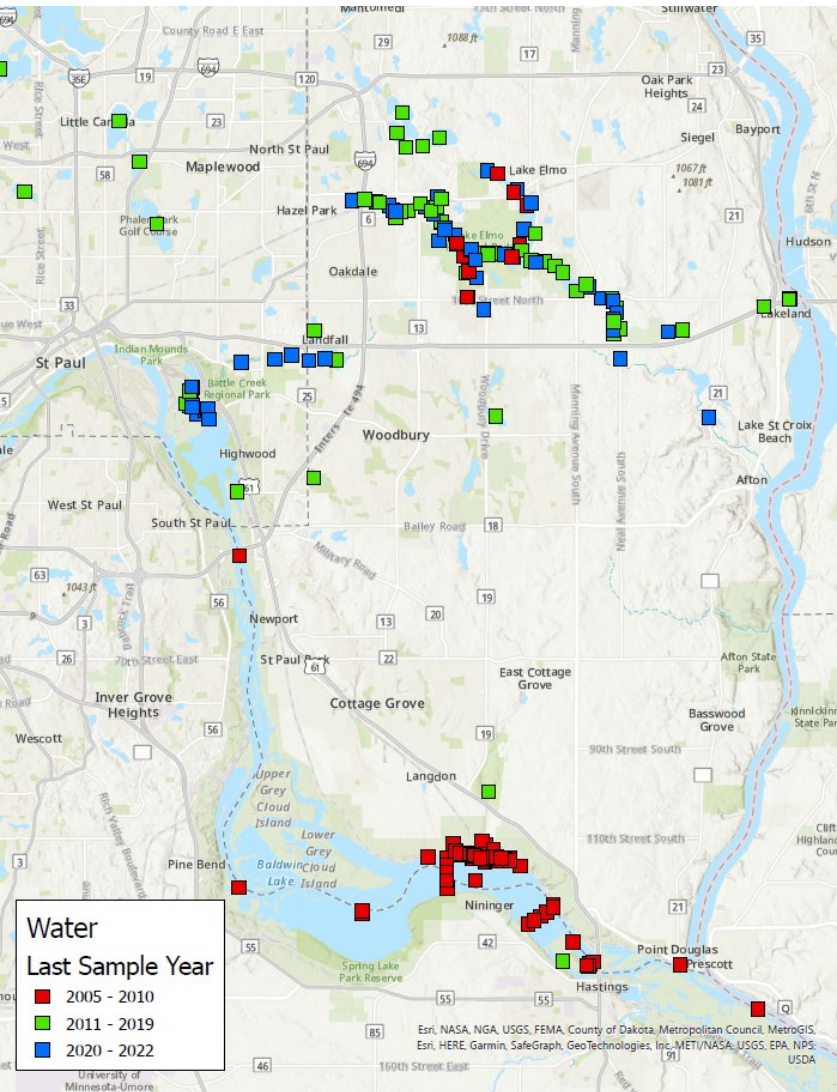


St. Croix River

- Contamination from the disposal sites to Project 1007 drainage to the river
- Contamination from the disposal sites via groundwater/surface water interactions
- Impaired Waters designation for PFOS

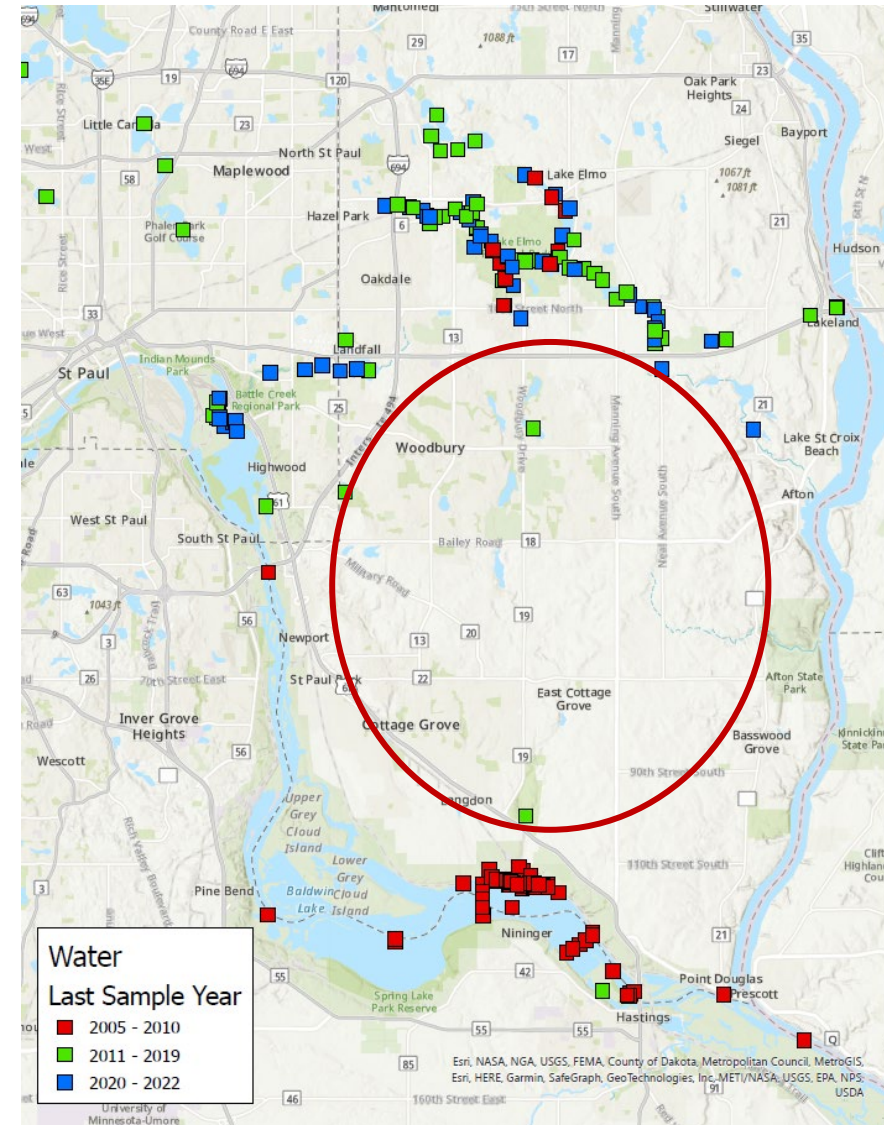


Available Data by Year



Limits on Available Data

- Data are not available for every waterbody or potential project location
- Areas with known contamination often have the most data



Use of Data in Project Review

- One of **multiple** review criteria we will use to assess projects
- A review of existing data will only be used when deemed necessary given the context of the proposed project
 - Not all project types may be sensitive to PFAS contamination
- All available data will be assessed to understand potential contamination implications (using a **weight of evidence approach**)

Questions?

- Clarifying questions on the available data for determining the spatial extent?

