

# Preliminary Plan for Priority 2

Jennifer Peers, Abt Associates

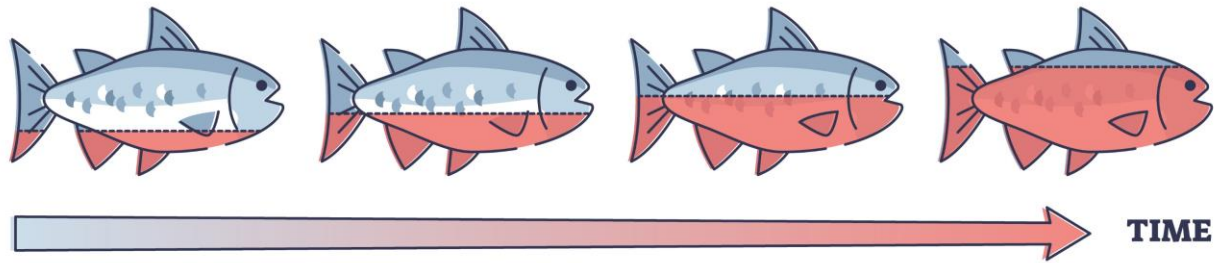
May 17 and 18, 2022

- Brief Priority 2 Background
- Obtain feedback from the Work Group on:
  - Priority 2 structure
  - Priority 2 Work Groups and Subgroup membership
  - Process approach, timeline and milestones for solicitation-based process

## Priority 2 Background

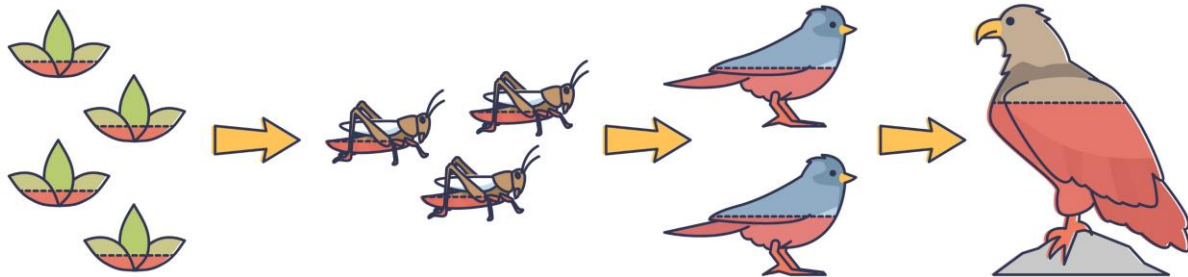
# PFAS in the environment – Why is this an issue?

## BIOACCUMULATION



● CONTAMINANT

## BIOMAGNIFICATION

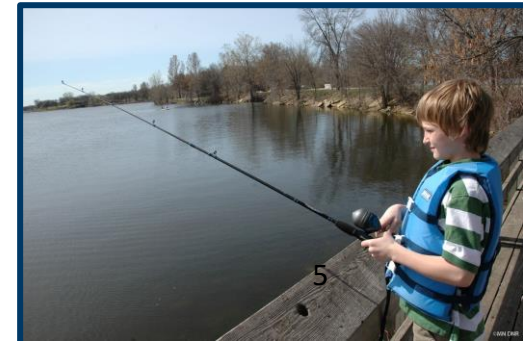


- Once released into the environment, PFAS do not biodegrade in environmental conditions (“forever chemicals”)
- PFAS is then taken up by plants and invertebrates, which then are consumed by other organisms
- PFAS tend to bioaccumulate and biomagnifies in exposed wildlife species

# Ecological Harm from PFAS



- PFAS releases to environment cause injuries to fish and wildlife
  - Acute toxicity of organisms (e.g. plants, invertebrates, amphibians, fish)
  - Other harm, including developmental, reproductive, immunological, morphological, and neurological effects
- Numerous studies in East Metro area on these injuries
  - For example, PFAS is causing reduced hatching success in tree swallows
- PFAS in fish is a concern for human health reflected by fish consumption advisories
- PFAS releases have resulted in less wildlife for us to enjoy and consume
- **Priority 2 is intended to replace, protect, enhance these natural resources and services that have been lost**



# Priority 2 Settlement Language

“utilize the Grant on projects that restore and enhance aquatic resources, wildlife, habitat, fishing, resource improvement, and outdoor recreational opportunities in the East Metropolitan Area and in downstream areas of the Mississippi and St. Croix Rivers.

These projects may include, but are not limited to:

- (i) aquatic habitat and water resource protection and restoration;
- (ii) terrestrial and water trails;
- (iii) boat ramps and/or fishing piers along the Mississippi River, Lake Elmo, or other waterbodies in or downstream of the East Metropolitan Area;
- (iv) the restoration of wildlife habitat; and
- (v) implementation of other terrestrial conservation and recreational improvements in the same geographic area.”

# Early Work Group Priority 2 Goals

## Priority 2 – Natural Resource Restoration, Protection, and Enhancement

- Restore, protect, and enhance aquatic resources, wildlife, and habitats.
- Reduce fish tissue contamination and remove PFAS-based fish consumption advisories.
- Improve and enhance outdoor recreational opportunities.



**m**  
DEPARTMENT  
OF HEALTH

## Eat Fish Often?

A Minnesota Guide to Eating Fish

### Safe Eating Guidelines

Most fish are healthy to eat. Fish are a great way to get protein and good fats, but any fish (store-bought or locally-caught) could have contaminants such as mercury that can harm human health – especially children and fetuses.

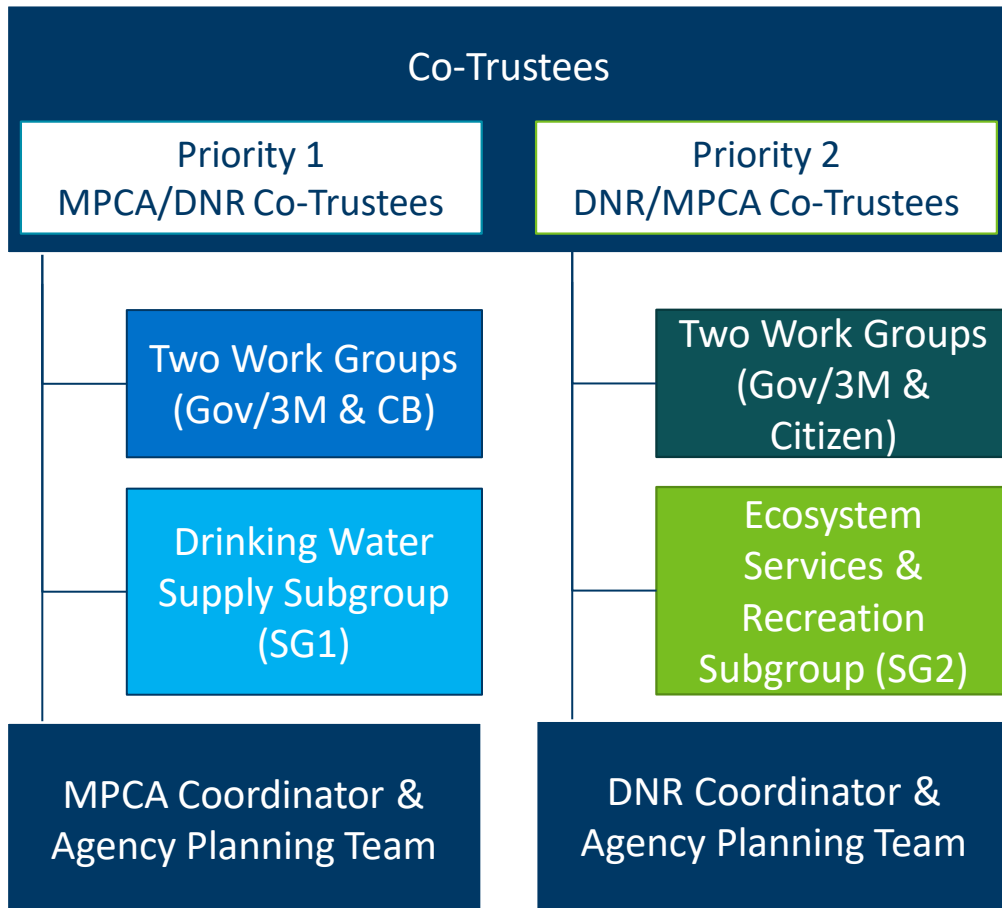
**Statewide Safe-Eating Guidelines**

7

## Priority 2 Structure

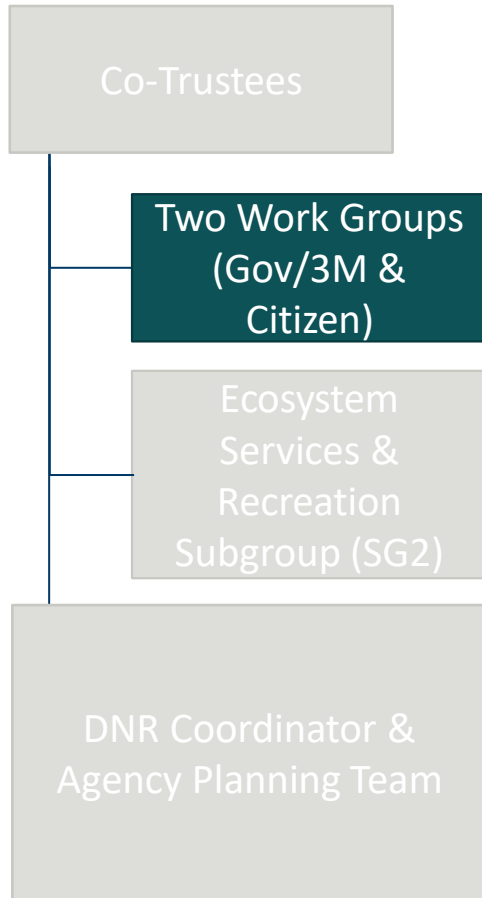


# Revised Priority 2 Structure



- Priority 1 and Priority 2 have similar Work Group structure, but may differ in:
  - Agency staff members
  - Work group and subgroup representatives
  - Focus on planning process
  - Milestones and feedback needed
  - Shorter time frame

# Revised Priority 2 Structure: Work Groups

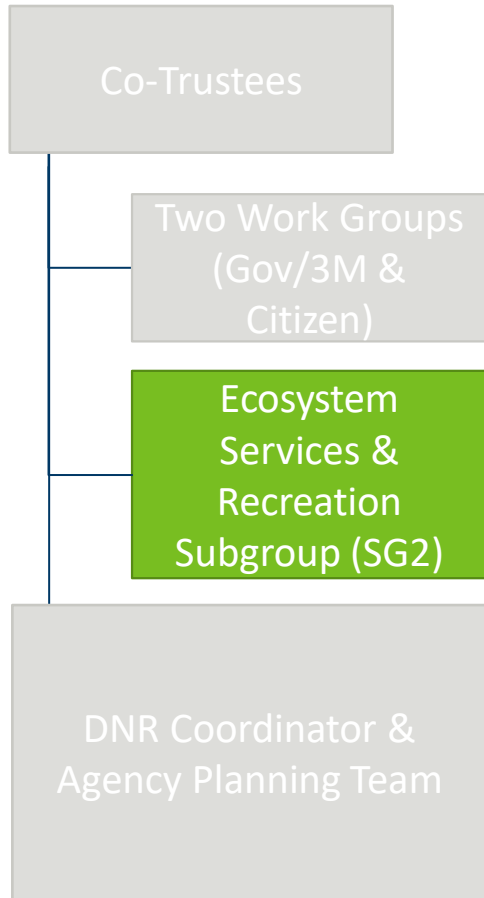


## Government/3M & Citizen Work Groups

- Who's involved
  - Communities would select their representatives for the Government/3M Work Group (could be same as Priority 1)
    - Option to opt out if they do not want to participate in planning process
  - Area residents can apply for membership on the Citizen Work Group
- What's their role\*
  - Work Group members would provide high level feedback on Priority 2 process documents (e.g. Charters, Goals, Criteria)
  - Identify and recommend projects

\*Conflict of interest considerations will be addressed in advance to avoid accidentally disqualifying an organization from RFPs.

# Revised Priority 2 Structure: Subgroup



## Ecosystem Services and Recreation Subgroup (SG2)

- Who's involved
  - Technical, recreational, natural resource, and environmental staff from Priority 2 work group communities and counties
    - Option to opt out if they do not want to participate in planning process
  - Watershed districts
  - Resource- and recreation-focused stakeholders
- What's their role\*
  - SG2 members would provide background and technical information to inform Priority 2
  - SG2 members would provide high level feedback on Priority 2 process documents (e.g. Charters, Goals, Criteria)

\*Conflict of interest considerations will be addressed in advance to avoid accidentally disqualifying an organization from RFPs.

# Work Group Membership

- Work group membership is broadly defined in the settlement:

"Working Group" shall mean a working group established by the MPCA and the DNR, consisting of representatives of the MPCA, the DNR, East Metropolitan Area municipalities, and 3M. The composition of the Working Group may vary depending on the project(s) at issue.

- For Priority 1, the Co-trustees selected Work Group members based on:
  - **3M/Gov Work Group:** communities listed in the settlement and then added several additional communities where drinking water was also impacted by 3M PFAS releases
  - **Citizen/Business Work Group:** citizens and businesses were from the same area and selected by application

# Priority 2 Work Group Membership Proposal

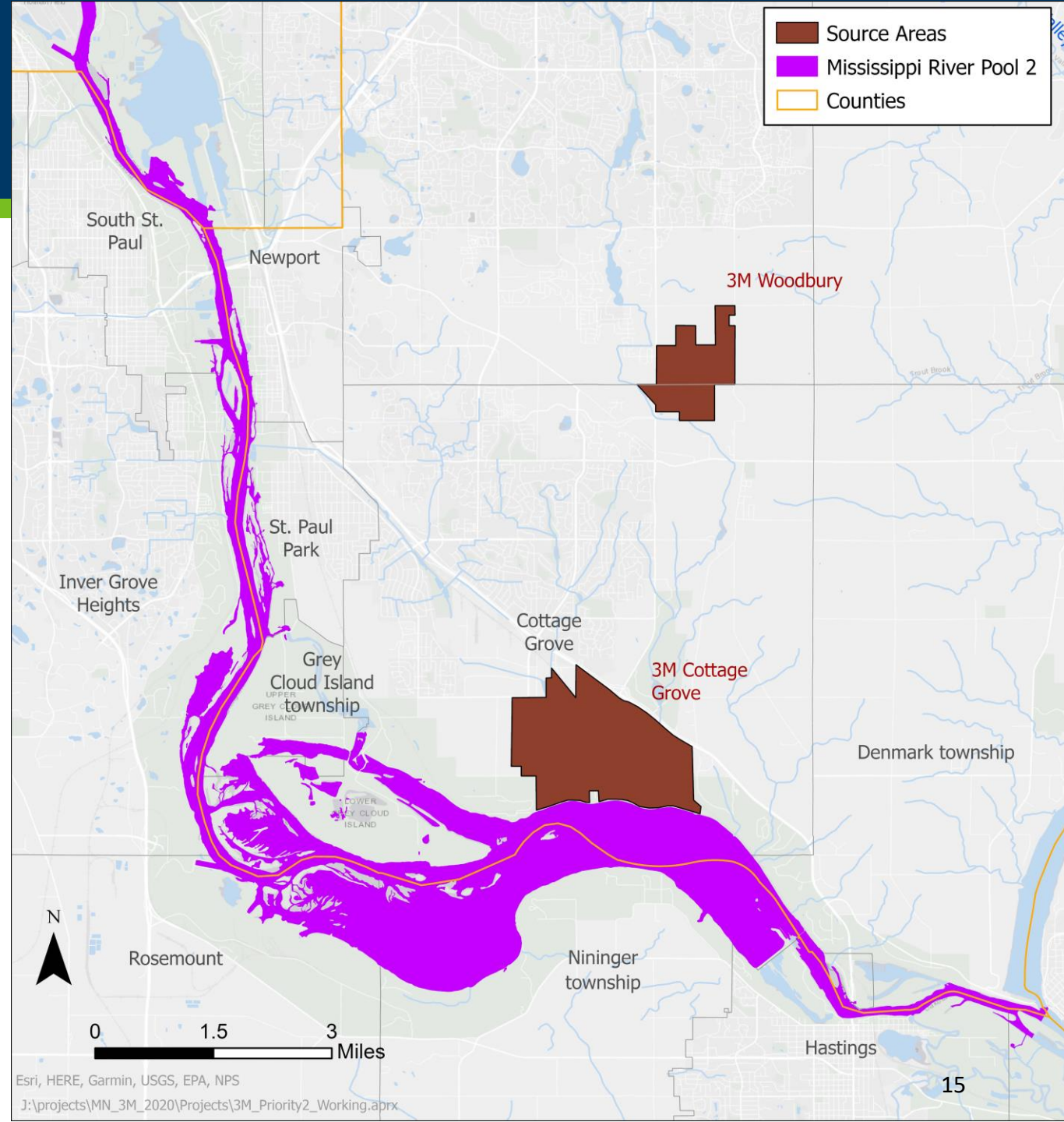
- Communities will be invited to join the Priority 2 Government/3M Work Group if they:
  1. Have experienced natural resources injuries or recreational service losses to from PFAS released by 3M; and
  2. Are located in the East Metropolitan Area and downstream locations of the Mississippi and St. Croix Rivers

# Priority 2 Approach to Identifying Impacted Communities

- Considered impacts to natural resources and recreational opportunities
- Based criteria on available lines of evidence
  - PFAS contamination pathways (groundwater, surface water, sediment, biota)
  - PFOS-impaired waters, and
  - Fish consumption PFOS advisories/PFOS in fish tissue
- Related to releases from 3M; cognizant of other PFAS sources

# Recommended Communities for Priority 2: Mississippi River

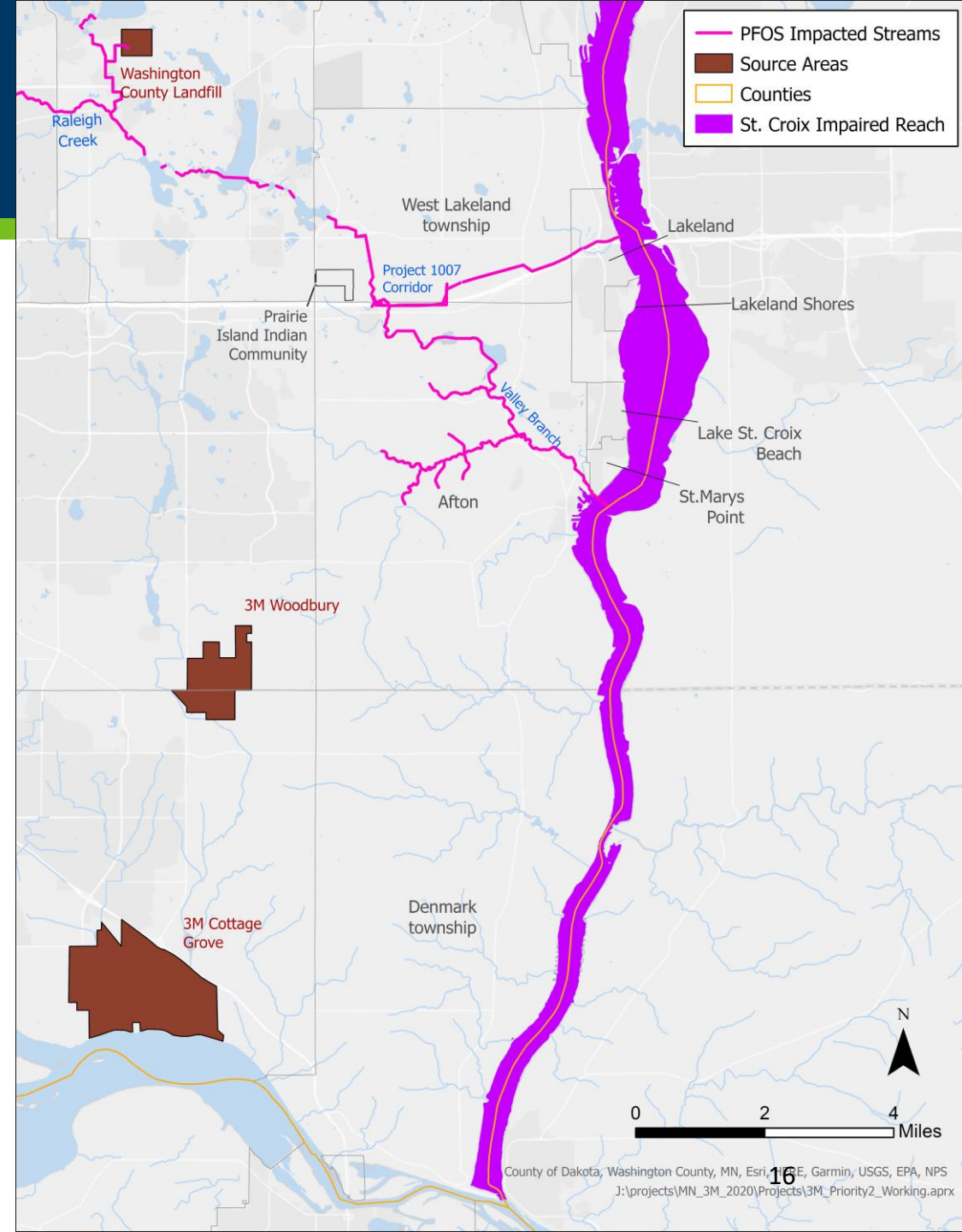
- Contamination from the disposal sites via groundwater/surface water interactions
- Fish Consumption PFOS advisories
- Impaired Waters designation for PFOS





# Recommended Communities for Priority 2: St. Croix River

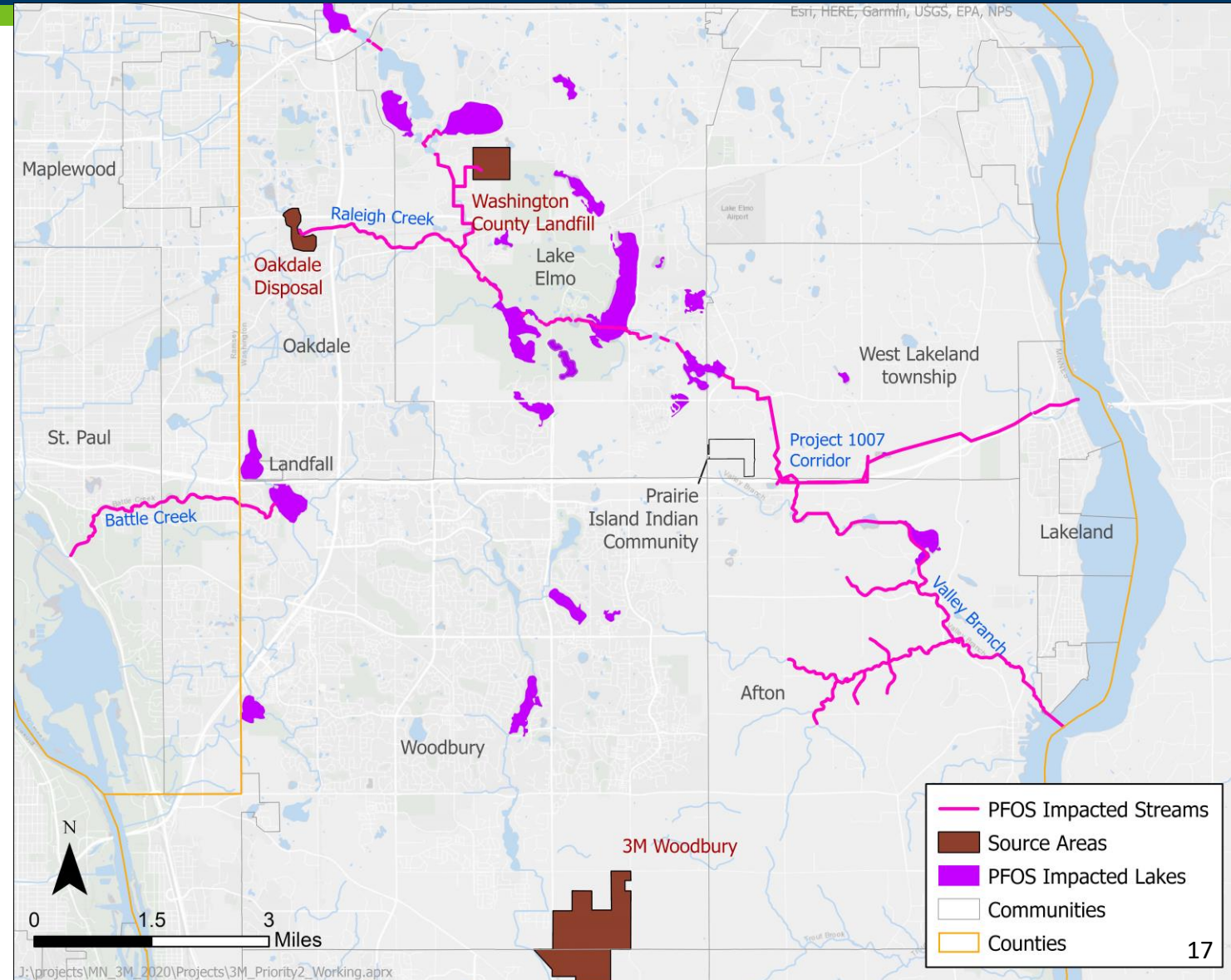
- Contamination from the disposal sites to Project 1007 drainage to the river
- Contamination from the disposal sites via groundwater/surface water interactions
- Impaired Waters designation for PFOS





# Recommended Communities for Priority 2: Lake and streams

- Contamination from the disposal sites to Project 1007 drainage to the river
- Contamination from the disposal sites via groundwater/surface water interactions
- Fish consumption PFOS advisories/PFOS in fish tissue
- Impaired Waters designation for PFOS



# Recommended Participants for Government/3M Work Group

1. Afton
2. Cottage Grove
3. Denmark
4. Grey Cloud Island
5. Hastings
6. Inver Grove Heights
7. Lake Elmo
8. Lake St. Croix Beach
9. Lakeland
10. Lakeland Shores
11. Landfall
12. Maplewood
13. Newport
14. Nininger township
15. Oakdale
16. Prairie Island Indian Community
17. Rosemount
18. St. Mary's Point
19. St. Paul
20. St. Paul Park
21. South St. Paul
22. West Lakeland
23. Woodbury
24. Dakota County
25. Washington County
26. 3M

- Note that communities can opt out of contributing to the process and are still eligible to apply for a project grant

# Citizen Work Group Membership

- New Priority 2 Citizen Work Group will be formed during June-August
  - Current Priority 1 Citizen/Business Work Group members can continue if desired
  - Potential new members can apply
- Sign up for Gov Delivery for the application announcement

# Subgroup 2 Membership

- New Subgroup 2 will be formed during June-August by Co-Trustee invitation
  - No capacity grants for participation in Subgroup 2
- Members who can provide technical background information and expertise in relevant project planning
  - Staff from Priority 2 communities and counties in recreational, natural resource, and environmental departments
  - Watershed districts
  - Other resource- and recreation-focused stakeholders with technical background knowledge

## Priority 2 Process

# Priority 2 Project Funding Approach

- Grant funds for projects will be available via a competitive solicitation process
- Who can apply for a grant?
  - Project Sponsor: Any individual or organization with capability to propose and execute a project
  - NOT limited to Priority 2 Work Group members
  - Collaborations are encouraged
- Request for Proposals "RFP" Solicitations Considerations
  - Need to consider conflict of interests for both individuals and organizations; cannot give unfair advantage
  - Need to consider inclusiveness, disadvantaged and diverse populations



# Milestones for Solicitation-based Process

① Develop Goals, Scope, and Criteria	② Undertake Project Solicitations	③ Evaluate Restoration Project Proposals	④ Implement Projects
~ 6 months	~ 3 months	~ 6 months	TBD
<ul style="list-style-type: none"> <li>• Develop charters and undertake “visioning exercise” on what success looks like</li> <li>• Develop detailed goals</li> <li>• Develop scope and evaluation criteria</li> </ul>	<ul style="list-style-type: none"> <li>• Develop grant solicitations using scope and criteria developed in Step 1</li> </ul>	<ul style="list-style-type: none"> <li>• Receive proposals and follow-up with questions</li> <li>• Evaluate all projects using criteria developed in Step 1</li> </ul>	<ul style="list-style-type: none"> <li>• Award grants and enter into grant agreements</li> <li>• Administer grants</li> <li>• Develop metrics and report on progress</li> </ul>

# Example of Priority 2 Work Groups and Subgroup Schedule

3 <sup>rd</sup> Quarter			4 <sup>th</sup> Quarter			1 <sup>st</sup> Quarter			2 <sup>nd</sup> Quarter		
July	August	Sept	October	November	December	January	February	March	April	May	June
		Priority 2 Gov/3M and Citizen work group		Priority 2 Gov/3M and Citizen work group		Priority 2 Gov/3M and Citizen work group				Priority 2 Gov/3M and Citizen work group	
		Ecosystem Services & Recreation Subgroup (SG2)		Ecosystem Services & Recreation Subgroup (SG2)		Ecosystem Services & Recreation Subgroup (SG2)		Ecosystem Services & Recreation Subgroup (SG2)		Ecosystem Services & Recreation Subgroup (SG2)	

\*One potential visual representation of the work group and subgroup schedule; we may meet more frequently at the beginning to get things up and running.



# Priority 2 – Proposed Next Steps

- **May**

- Coordinator starts late May or early June
- Current Work Group Meetings May 17 & 18th

**ONGOING:** Continue to investigate conflict of interest and work on proposed approaches to incorporate into the solicitation process

- **June-August**

- Recruit new members for Priority 2 Work Groups; Citizen and 3M/Government
- Co-Trustees to develop more specific ecosystem services and recreational draft goals
  - Meet with individual stakeholders (some Sub-group 2 members) to gather information
- Develop draft WG and SG charters

- **September**

- Initiate Priority 2 Work Group and Subgroup meetings

- All questions regarding Priority 2 should be sent to here: [3MPriority2@state.mn.us](mailto:3MPriority2@state.mn.us)